



Bonhams

The Alan and Bronnie Blaugrund Collection of Native American Basketry

Los Angeles | December 10, 2018

The Alan and Bronnie Blaugrund Collection of Native American Basketry

Los Angeles | Monday December 10 2018 at 11am

BONHAMS

7601 W. Sunset Boulevard
Los Angeles, California 90046
bonhams.com

PREVIEW

Friday December 7
12pm to 5pm
Saturday December 8
12pm to 5pm
Sunday December 9
12pm to 5pm
Monday December 10
9am to 11am

SALE NUMBER: 25201

Lots 1 - 210

CATALOG: \$35

BIDS

+1 (323) 850 7500
+1 (323) 850 6090 fax
bids.us@bonhams.com

To bid via the internet please visit
www.bonhams.com/25201

Please note that telephone bids must be submitted no later than 4pm on the day prior to the auction. New bidders must also provide proof of identity and address when submitting bids. Please contact client services with any bidding inquiries.

LIVE ONLINE BIDDING IS AVAILABLE FOR THIS SALE

Please email bids.us@bonhams.com with "Live bidding" in the subject line 48hrs before the auction to register for this service.

Bidding by telephone will only be accepted on a lot with a lower estimate in excess of \$1000.

Please see pages 164 to 166 of Native American Art section for bidder information including Conditions of Sale, after-sale collection and shipment.

INQUIRIES

Ingmars Lindbergs, Director
ingmars.lindbergs@bonhams.com
+1 (415) 503 3393

Kim Jarand, Specialist
kim.jarand@bonhams.com
+1 (323) 436 5430

ILLUSTRATIONS

Front cover:
Lots 39, 43, 48, 109, 127, 158
Session page: Lot 57 (detail)

REGISTRATION IMPORTANT NOTICE

Please note that all customers, irrespective of any previous activity with Bonhams, are required to complete the Bidder Registration Form in advance of the sale. The form can be found at the back of every catalogue and on our website at www.bonhams.com and should be returned by email or post to the specialist department or to the bids department at bids.us@bonhams.com

To bid live online and / or leave internet bids please go to www.bonhams.com/auctions/25201 and click on the Register to bid link at the top left of the page.

Bonhams

220 San Bruno Avenue
San Francisco, California 94103
© 2018, Bonhams & Butterfields
Auctioneers Corp.; All rights reserved.
Bond No. 57BSBGL0808

REGULATED SPECIES MATERIALS AND CITES PERMITS

The export of a lot from the United States or import into certain countries may be subject to export or import regulations, licensure and/or other restrictions; in particular, lots containing plant or animal materials such as ivory, rhinoceros horn, tortoiseshell, coral, whalebone or certain types of woods, irrespective of age or value, may require the granting of one or more export or import licenses or certificates, or may be banned from import altogether by some countries. Moreover, the ability to obtain an export license or certificate does not insure the ability to obtain an import license or certificate in another country. Lots that contain such regulated species materials may also not be eligible for exportation or for re-importation into the United States if they are not at least 100 years of age, and, under current law, lots containing African Elephant Ivory may no longer be re-imported into the United States regardless of age. In addition, resales of lots containing certain regulated species materials may be subject to restrictions in some jurisdictions.

Lots noted in the catalog with a Y next to the lot number contain one or more such regulated plant or animal materials. It is the buyer's responsibility to investigate any such restrictions and to obtain any relevant export or import licenses. Please note that this process is governed by local authorities and may take considerable time. Regardless of any delay in the obtaining of an export or import license or certificate or denial of a license's or certificate's issuance, purchased lots shall be paid for in accordance with the Conditions of Sale, and any such delay or denial shall not serve as the basis for cancellation of any sale. Prospective buyers are advised to obtain information from the relevant regulatory authorities regarding export and import restrictions, requirements, and costs prior to bidding.

Prospective buyers should also check with their local (e.g. state) regulatory authorities regarding any local restrictions and/or permit requirements that may apply with respect to purchases of regulated species materials, including without limitation purchases of items containing elephant ivory or rhino horn. For example, we are advised that New York buyers of any lot containing elephant or mammoth ivory or rhino horn will be responsible for obtaining a New York State permit before taking possession of the lot within New York State, and that the State of New Jersey has banned the import of items containing elephant or marine mammal ivory or rhino horn into that state.

Upon request, Bonhams can refer the purchaser to a third party agent to assist the purchaser in attempting to obtain the appropriate licenses and/or certificates. However, there is no assurance that any necessary licenses or certificates can be obtained. Please contact the Specialist Department for a suggested list of shipping agents prior to placing a bid if you are uncertain as to whether a lot is subject to export/import license or certificate requirements or related restrictions.

IMPORTANT NOTICE

Statements of condition are included only for items having restoration which is not readily discernable. Obvious repairs have not been pointed out. Furthermore, it should be understood that such statements of condition are, by their nature, subjective and are not intended to be comprehensive. They are intended only as an aid to prospective purchasers, who should familiarize themselves with the "Conditions of Sale" printed in the front pages of this catalog, examine objects carefully and/or request condition reports from Bonhams' Native American Art Department.

AFTER SALE COLLECTION AND SHIPMENT

- Clients will be expected to pick up all property from Bonhams by 5PM on Monday, December 17, 2018.
- During this period, clients may remove such property themselves, make arrangements with the Bonhams packing and shipping department or their own shipper for removal of all property.
- Payment of the hammer price, premium and any applicable sales taxes must be made directly to Bonhams prior to the release of property.
- Change of shipping address must be authorized by Bonhams Revenue Manager, Martin Romero, before the Bonhams packing and shipping department will be permitted to reroute your purchases.

Acquiring this collection has been a labor of love for us over the last forty years. It all started on a rainy day in 1972 at the Portland Oregon Art Museum where we saw a beautiful collection of Northwest Coast baskets. We felt we wanted to know more about them and the people who made them. We also wanted to acquire some for our home. Our collection grew slowly over the years as we sought out Native American baskets from western North America and learned more about this artform. This collection represents our respect and admiration for the Native tribal people whose skills are represented here. Our gradual progress in comprehending basketry's multiple materials and weaving techniques has been a rewarding challenge which enhanced our understanding and appreciation on this age-old art form. Over the years, people have asked us which specific basket or baskets we prefer. In all honesty, we like them all. They represent careful harvesting and material preparation and then the use of multiple techniques to put together what we feel are works of art. Admittedly, some are better than others, but they all required careful planning and technique and all represent a long line of basket making tribal ancestors.

It has taken many years studying texts and journals and help from basket dealers, academics, and museum curators to understand this art form. We are grateful for all this kind help. We are still learning! We would particularly like to thank our friend and co-author John Kania who over the years has been especially helpful in our basketry education.

Alan and Bronnie Blaugrund
June, 2018





1

1

A YAVAPAI TRAY

Woven in a positive-negative diamond lattice pattern, showing deer, chickens, and small crosses, an eight-pointed star on the tondo.
height 3 3/4in, diameter 17 3/4in

\$2,500 - 3,500

Kania, John and Blaugrund, Alan, *Antique Native American Basketry of Western North America*, 2014, Marquand Books, Seattle, p. 96



2

2

A YAVAPAI TRAY

A five-petal rosette enclosing a central radial pattern and triangular complements, negative human figures arrayed below the rim.
height 4 1/4in, diameter 18in

\$3,000 - 4,000

Kania, John and Blaugrund, Alan, *Antique Native American Basketry of Western North America*, 2014, Marquand Books, Seattle, p. 96 and p. 46 (detail)



3

3

A YAVAPAI TRAY

With four decorative panels from the rim, each with negative deer and checkered diamonds, human figures and more deer in the reserves, all about a radial center.
height 3in, diameter 17in

\$2,200 - 2,800

Kania, John and Blaugrund, Alan, *Antique Native American Basketry of Western North America*, 2014, Marquand Books, Seattle, p. 96

4

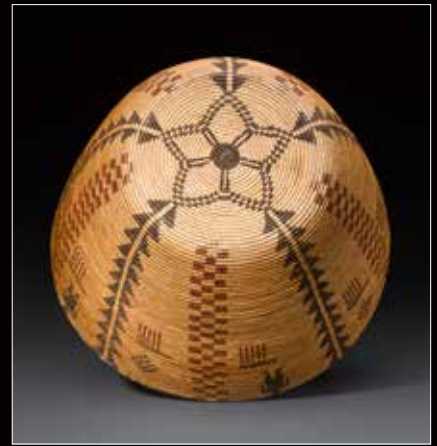
AN APACHE OLLA

Showing vertical bands of split arrowheads and checkered columns, complemented in the reserves by human figures, American flags, and diamond lozenges, *some replaced stitches.*
height 17 1/4in, diameter 17 1/2in

\$6,000 - 9,000

Illustrated

Kania, John and Blaugrund, Alan, *Antique Native American Basketry of Western North America*, 2014, Marquand Books, Seattle, p. 101



(alternate view)





5



6



7



8

5

AN APACHE OLLA

Worked in columns of vertically stacked arrowheads, men and dogs filling the reserves, the men shown wearing typical Apache “cactus kicker” footwear with raised pointed toes, more figures on horseback parade around the neck.

height 18 1/2in, diameter 14in

\$3,000 - 4,000

Illustrated

Kania, John and Blaugrund, Alan, *Antique Native American Basketry of Western North America*, 2014, Marquand Books, Seattle, p. 101

6

AN APACHE OLLA

Finely woven, with vertical panels in a positive-negative effect showing deer, chuckwallas, cacti, and a variety of geometric filler devices.

height 11 1/2in, diameter 11 1/4in

\$5,000 - 7,000

Exhibited and Illustrated

Hartman, Bruce Curator, *Masterpieces of Native American Basketry*, Panhandle-Plains Historical Museum, June 15th to August 3rd, 1986, accompanying catalogue pp. 32-33; also illustrated in Kania, John and Blaugrund, Alan, *Antique Native American Basketry of Western North America*, 2014, Marquand Books, Seattle, p. 101

7

AN APACHE POLYCHROME OLLA

Worked in checkered stairstep bands, human figures perched atop steps in the lower register, an outlined diamond on the base.

height 15in, diameter 12 1/4in

\$3,000 - 4,000

Illustrated

Kania, John and Blaugrund, Alan, *Antique Native American Basketry of Western North America*, 2014, Marquand Books, Seattle, p. 101

8

A COLLECTION OF PIMA MINIATURE BASKETS

One example picturing dancing couples and another women picking tunas from saguaro cacti, *both attributed to Suzy White*; three others with pictorial motifs, the remainder geometric; and an open bowl with beaded decoration.

diameter 1 1/4 - 2 1/2in

\$2,500 - 3,500

Provenance

Bert Robinson Collection, Arizona, for the first two

Illustrated

Kania, John and Blaugrund, Alan, *Antique Native American Basketry of Western North America*, 2014, Marquand Boos, Seattle, p. 115 and 116



9

9

AN APACHE TRAY

With a substantial population of human figures and dogs surrounding the concentrically ringed center.

height 5 1/2in, diameter 17 3/4in

\$1,800 - 2,800

Illustrated

Kania, John and Blaugrund, Alan, *Antique Native American Basketry of Western North America*, 2014, Marquand Books, Seattle, p. 100



10

10

AN APACHE TRAY

Woven with a segmented pattern of decorative panels tapering towards the center, each showing chevrons, a checkered design, or steps and hourglass figures.

height 4in, diameter 17in

\$2,500 - 3,500

Illustrated

Kania, John and Blaugrund, Alan, *Antique Native American Basketry of Western North America*, 2014, Marquand Books, Seattle, p. 100



11

11

AN APACHE TRAY

The dark center ringed by crenelated and serrated banding, a half a dozen deer placed as complements.

height 6in, diameter 22in

\$3,000 - 4,000

Illustrated

Kania, John and Blaugrund, Alan, *Antique Native American Basketry of Western North America*, 2014, Marquand Books, Seattle, p. 100

12

A PIMA TRAY

Worked in a striking pinwheel pattern of positive-negative panels, triangles and “coyote tracks” as complements.

height 4 1/2in, diameter 14 3/4in

\$1,500 - 2,000

Illustrated

Kania, John and Blaugrund, Alan, *Antique Native American Basketry of Western North America*, 2014, Marquand Books, Seattle, p. 115



12

13

A PIMA TRAY

Drawn with two registers of angular meanders encircling the flat dark tondo.

height 6 1/2in, diameter 19in

\$1,500 - 2,000

Illustrated

Kania, John and Blaugrund, Alan, *Antique Native American Basketry of Western North America*, 2014, Marquand Books, Seattle, p. 115



13

14

A PIMA TRAY

Woven with an Apache-style pattern of concentric four-petal rosettes in a positive-negative effect.

height 5 3/4in, diameter 21 1/2in

\$2,000 - 3,000

Illustrated

Kania, John and Blaugrund, Alan, *Antique Native American Basketry of Western North America*, 2014, Marquand Books, Seattle, p. 115



14



15



16

17

**15
THREE PIMA TRAYS**

All very finely woven, two with three-petal squash blossom designs; the third displaying three angular hooked devices about a rosette center.
diameter 10 1/2, 9 1/2 and 6 1/2in

\$1,800 - 2,400

Illustrated
Kania, John and Blaugrund, Alan, *Antique Native American Basketry of Western North America*, 2014, Marquand Books, Seattle, p. 115

**16
FOUR PIMA TRAYS**

The largest a finely woven tray, showing two rows of diamond lozenges; along with two smaller geometric trays, one beaded about the rim; and a round-bottomed bowl with unusual positive-negative lobed design.
diameter 11 1/4 - 6in

\$1,500 - 2,000

Illustrated
Kania, John and Blaugrund, Alan, *Antique Native American Basketry of Western North America*, 2014, Marquand Books, Seattle, p. 115 and 116 for the beaded example

**17
FOUR SOUTHWEST TRAYS**

Including two Pima examples, one very finely woven in a radial pattern of connected triangles and diamond complements, *Teresa Newman*, the other depicting images of lizards; along with two small Apache trays, the smallest in a positive-negative design with men and dogs, the other a polychrome bowl.
diameter 10 1/4 - 7 3/4in

\$1,500 - 2,000

Illustrated
Kania, John and Blaugrund, Alan, *Antique Native American Basketry of Western North America*, 2014, Marquand Books, Seattle, p. 96 for one of the Apaches, p. 115 for the Pima pictorial example

The attribution to Teresa Newman was made by New York-based dealer and basket specialist, Marcy Burns.



18

19



20

18
FOUR PIMA TRAYS

All depicting the “man in the maze” pattern, three of them worked in negative fashion with a dark background, the fourth, an extremely tightly woven plaque, in the more typical dark-on-light tonality.
diameter 7 1/2 - 2 1/2in

\$1,800 - 2,400

Illustrated
Kania, John and Blaugrund, Alan, *Antique Native American Basketry of Western North America*, 2014, Marquand Books, Seattle, p. 115 for two of the trays, and p. 116 for the others

19
SEVEN SOUTHWEST MINIATURES BASKETS

All very tightly woven, including three Pima plaques: one showing the “man in the maze”, *attributed to Suzy White*, a polychrome butterfly basket and the third in a spiral design; three Chemehuevi ollas, two of which are negative examples; and a Papago horsehair tray, with another version of the “man in the maze”.
diameter 3 - 5/16in

\$1,500 - 2,000

Illustrated
Kania, John and Blaugrund, Alan, *Antique Native American Basketry of Western North America*, 2014, Marquand Books, Seattle, pp. 215 and 216 for the two largest Pimas

The attribution to Suzy White was made by Santa Fe basket dealer and author, John Kania.

20
FOUR PIMA TRAYS

All very tightly woven, the largest showing two registers of angular hooked devices; two miniature trays in distinct geometric patterns and beads about the rim; and a miniature plaque with a pinwheel design.
diameter 9 - 4in

\$1,800 - 2,400

Illustrated
Kania, John and Blaugrund, Alan, *Antique Native American Basketry of Western North America*, 2014, Marquand Books, Seattle, p. 115, also p. 116 for the three smallest examples



22



21



21

A RARE PUEBLO TRAY

Woven similar to Navajo or San Juan Paiute trays of the type, though decorated with distinct checkered box-within-a-box motifs. *height 4 1/2in, diameter 16in*

\$4,000 - 6,000

Illustrated

Kania, John and Blaugrund, Alan, *Antique Native American Basketry of Western North America*, 2014, Marquand Books, Seattle, p. 107, also p. 92 (detail)

In a letter to the collector, Bruce Bernstein, a basket scholar who at that time worked with the National Museum of the American Indian in Washington D.C. wrote about this unusual tray. "...As you know, people suggest that Pueblos stopped making coiled baskets. They slowed but never stopped. They slowed probably following the entrance of the Athapascan peoples, and then again following the Spanish settlements...Each Athapascan group learned to make baskets once they arrived in the SW as is evidenced by the different Apache and Navajo styles, more or less conforming to the Pueblo style of basket that was already being manufactured in the same geographic area...baskets made by Pueblo people are usually identified as Navajo. There is little chance these were collected from Navajo.

Other than a few things here or there, (a) coiled basket collected in the villages is rare, but present. In all of this, the Pueblos are the constant, while the other groups moved around them and through them. In addition...there are not many baskets collected because there is such an emphasis on pottery in the Pueblos...

The difference is in the design layout. Pueblo baskets are designed and laid out like pottery. They are made to look down into. There are some wonderful examples at MIAC on permanent display. They are angled and more vertically oriented. Navajo basket designs are banded - like the rugs."

22

THREE SOUTHWEST POLYCHROME BASKETS

Including two Navajo trays, Spider Woman crosses embellish both; and a Hopi wicker plaque, with a colorful geometric arrangement. *diameter 19, 18 1/4 and 17 3/4in*

\$1,200 - 1,800

Illustrated

Kania, John and Blaugrund, Alan, *Antique Native American Basketry of Western North America*, 2014, Marquand Books, Seattle, p. 110, for the Navajo trays, p. 124 for the Hopi plaque

23

AN APACHE POLYCHROME TRAY

Woven with a five-pointed star at the center, surrounded by checkered and zigzag banding.
height 5in, diameter 17in

\$3,000 - 4,000

Illustrated

Kania, John and Blaugrund, Alan, *Antique Native American Basketry of Western North America*, 2014, Marquand Books, Seattle, p. 100



23

24

AN APACHE TRAY

Showing a central multi-pointed star enclosed by checkered and dentate banding.
height 5in, diameter 18 3/4in

\$4,000 - 6,000

Illustrated

Kania, John and Blaugrund, Alan, *Antique Native American Basketry of Western North America*, 2014, Marquand Books, Seattle, p. 100



24

25

AN APACHE TRAY

With a concentric rosette pattern of positive-negative petals, encircled by a series of dogs.
height 4 1/4in, diameter 20in

\$4,000 - 6,000

Kania, John and Blaugrund, Alan, *Antique Native American Basketry of Western North America*, 2014, Marquand Books, Seattle, p. 69



25

26



26

A CHEMEHUEVI TRAY

A pair of checkered bands ring the open tondo.

height 2 1/2in, diameter 15 1/4in

\$2,000 - 3,000

27

A YAVAPAI TRAY

Very tightly woven, showing a concentric five-petal rosette in positive-negative fashion, small diamonds as accents.

height 2in, diameter 12in

\$1,500 - 2,000

Kania, John and Blaugrund, Alan, *Antique Native American Basketry of Western North America*, 2014, Marquand Books, Seattle, p. 96

27



28



28

A PIMA TRAY

Finely woven, illustrating the "man in the maze" pattern.

height 2 1/2in, diameter 10 3/4in

\$1,500 - 2,000

Illustrated

Kania, John and Blaugrund, Alan, *Antique Native American Basketry of Western North America*, 2014, Marquand Books, Seattle, p. 115

29

AN APACHE TRAY

Woven with a pair of concentric outlined stars emblazoned across the center, complementary triangles pendant from the rim.

height 4 1/2in, diameter 25 1/2in

\$2,500 - 3,500

Illustrated

Arizona Highways, (the basket issue), July 1975, p. 32, ill. BK-67; Kania, John and Blaugrund, Alan, *Antique Native American Basketry of Western North America*, 2014, Marquand Books, Seattle, p. 100



29



30

30

TWO PIMA BASKETS

Including a polychrome olla, columns of stacked bars and chevrons adorn the sides; and a deep tray, concentric fretwork bands enclose the wide six-pointed star center, *paint touch-up on the latter.*
height of first 17in, diameter of latter 20in

\$1,200 - 1,800

Provenance

Bert Robinson collection, Arizona, for the latter

Illustrated

Kania, John and Blaugrund, Alan, *Antique Native American Basketry of Western North America*, 2014, Marquand Books, Seattle, p. 115

31

A PIMA OLLA

Decorated with angular fretwork bands in two registers above and below the sharp shoulder.
height 16in, diameter 15 1/4in

\$1,500 - 2,000

Illustrated

Kania, John and Blaugrund, Alan, *Antique Native American Basketry of Western North America*, 2014, Marquand Books, Seattle, p. 115



31



32

FOUR CHEMEHUEVI BASKETS

The largest a tray, decorated in a diamond pattern; a miniature rattlesnake basket, *Maggie Painter*, dyed quill accents for the serpent's eyes; a California Chemehuevi polychrome negative oval example; and a very tightly woven miniature tray with diamonds and fretwork bands.
diameter 8 - 3 3/4in

\$2,000 - 3,000

Provenance

For the first, Dr. Francis Xavier Ammann Collection, the number L.1190/715 and 62.6 in ink on the underside of the basket

Illustrated

Kania, John and Blaugrund, Alan, *Antique Native American Basketry of Western North America*, 2014, Marquand Books, Seattle, p. 104, for the three smaller examples

Compares Favorably

See Collings, Jerry, *Profile of a Chemehuevi Weaver*, in *American Indian Art Magazine*, Autumn 1979, Volume 4, Number 4, p. 61 for a similar example to the snake basket and an entire article on Maggie Painter, pp. 60-67.

33

A CHEMEHUEVI OLLA

The enormous basket minimally decorated, with a series of floating solid diamonds about the midsection, five outlined diamonds placed overhead.

height 16in, diameter 18in

\$15,000 - 25,000

Provenance

Ammon/Levinson Collection, Southern California

Illustrated

Kania, John and Blaugrund, Alan, *Antique Native American Basketry of Western North America*, 2014, Marquand Books, Seattle, p. 104



34

A CHEMEHUEVI POLYCHROME SNAKE BASKET

Mary Snyder, the shallow bowl showing a pair of coiled rattlesnakes on the variegated ground, each serpent marked by “coyote track” cruciform motifs.
height 3 1/4in, diameter 13 1/2in

\$15,000 - 25,000

Provenance

Bert Robinson, former superintendent of the Pima Indian Agency in Arizona; Dr. Frank Hesse Collection; to the present owner

Illustrated

Kania, John and Blaugrund, Alan, *Antique Native American Basketry of Western North America*, 2014, Marquand Books, Seattle, p. 104

Compares Favorably

See Robinson, Bert, 1954, University of New Mexico Press, Albuquerque, p. 146, plate LXVII, for a very similar Mary Snyder snake basket.

35

A MISSION/CHEMEHUEVI POLYCHROME BASKET

Juana Augustine Tortes, with a pair of spreadwinged eagles, complemented by serrated elements and arrowhead motifs.
height 5in, diameter 9in

\$2,000 - 3,000

The designation of Juana Augustine Torres as the weaver was made by Chris Moser, former Curator of Anthropology at the Riverside Museum, Riverside, California. In a letter to the collector, Moser describes several baskets, one of which is the present lot: “Definitely Mrs. Clorine Hayward’s #91 (RMM has a color photo of it taken in the 1950s with the tag still on the string). She bought it from Mrs. Magee, daughter of Julian Augustine who got it from his sister Juana Augustine Tortes. Since Mrs. Hayward bought it in 1932 it was probably made by Juana. The Augustine family was part Chemehuevi and part Desert Cahuilla.”

A photocopy of the basket’s inventory as part of the Hayward collection is included with the lot and the tag on a string referenced remains inside the basket.



36

A MISSION VICTORVILLE-STYLE POLYCHROME BOTTLENECK BASKET

Attributed to Kitty Johnson, the body and shoulder filled with an outlined diamond lattice pattern.

\$2,000 - 3,000

Provenance

The Chapula/Richardson Collection, Victorville, CA, sold by Butterfields on April 23, 2001, lot 8149

Illustrated

Kania, John and Blaugrund, Alan, *Antique Native American Basketry of Western North America*, 2014, Marquand Books, Seattle, p. 104

The attribution to Kittie Johnson was made by Santa Fe basket dealer and author, John Kania.

37

A CHUMASH MINIATURE TRAY

The shallow receptacle with a negative pattern of alternating triangles in a zigzag band below the rim.

\$1,500 - 2,500

Illustrated

Kania, John and Blaugrund, Alan, *Antique Native American Basketry of Western North America*, 2014, Marquand Books, Seattle, p. 143

38

AN UNUSUAL CHEMEHUEVI MINIATURE OLLA

The rounded sides decorated with stylized blossoms and flowering plants, glass beads sewn into the basket appearing to be "fruit hanging from the trees".

height 2 3/4in, diameter 3 3/4in

\$2,000 - 3,000

Illustrated

Kania, John and Blaugrund, Alan, *Antique Native American Basketry of Western North America*, 2014, Marquand Books, Seattle, p. 104



35

36

37

38

A CHUMASH POLYCHROME BOTTLENECK BASKET

With sloping shoulders and flaring rim, decorated with vertical panels of negative diamonds complemented by conjoined box pairs, a zigzag ring about the top, checkered diagonals below the rim, *areas of stitch replacement and overpaint.*
height 6in, diameter 10 1/2in

\$25,000 - 45,000

Illustrated

Kania, John and Blaugrund, Alan, *Antique Native American Basketry of Western North America*, 2014, Marquand Books, Seattle, p. 143





(alternate view)



40

A CHUMASH POLYCHROME TRAY

The widely flaring basket with a series of vertical columns converging toward the center, each marked by zigzag or diagonal striping, overseen by a zigzag band below the rim.
height 3 1/2in, diameter 17in

\$8,000 - 12,000

Illustrated

Kania, John and Blaugrund, Alan, *Antique Native American Basketry of Western North America*, 2014, Marquand Books, Seattle, p. 143



41

A MISSION POLYCHROME TRAY

A four-arm radial pattern and concentric circles on the base, series of diamonds in alternating tonalities about the shoulder.
height 3 1/4in, diameter 18 1/4in

\$3,000 - 4,000

Illustrated

Kania, John and Blaugrund, Alan, *Antique Native American Basketry of Western North America*, 2014, Marquand Books, Seattle, p. 141

42

A MISSION VICTORVILLE-STYLE POLYCHROME BASKET

Attributed to Kitty Johnson, a deep bowl drawn with a lattice of connected diamond lozenges, a seven-pointed star on the base.
height 6 1/2in, diameter 15in

\$2,200 - 2,800

Provenance

The Chapula/Richardson Collection, Victorville, CA, sold by Butterfields on April 23, 2001, lot 8185

Illustrated

Kania, John and Blaugrund, Alan, *Antique Native American Basketry of Western North America*, 2014, Marquand Books, Seattle, p. 104

The attribution to Kitty Johnson was made by Santa Fe basket dealer and author, John Kania.



41



42

43

A YOKUTS POLYCHROME GAMBLING TRAY

With a slight upward flare near the rim, decorated in series of boxed hourglass devices encircling a diamondback rattlesnake band; along with a set of seven walnut dice, *made separately by Luana Quitiquit, Pomo.*
height 1in, diameter 27 1/2in

\$7,000 - 10,000

Illustrated

Kania, John and Blaugrund, Alan, *Antique Native American Basketry of Western North America*, 2014, Marquand Books, Seattle, p. 147



A KAWAISU BASKET

With high flat shoulder, tick marks on the raised neck, decorated with crenelated bands, red wool tufts and topknots.
height 7 1/2in, diameter 11 1/4in

\$12,000 - 18,000

Provenance

Gottlieb A. Steiner Collection, Pittsburgh, PA

Illustrated

Kania, John and Blaugrund, Alan, *Antique Native American Basketry of Western North America*, 2014, Marquand Books, Seattle, p. 156



(alternate view)



(alternate view)





45 (alternate view)



46 (alternate view)



47 (alternate view)

45

A PANAMINT BOTTLENECK BASKET

Attributed to Suzi Wilson, showing a repeated series of vertical sharply serrated zigzag bands running from the base to the rim.

height 6in, diameter 8 3/4in

\$2,000 - 3,000

Illustrated

Kania, John and Blaugrund, Alan, *Antique Native American Basketry of Western North America*, 2014, Marquand Books, Seattle, p. 151

The attribution to Suzi Wilson was made by Santa Fe basket dealer and author, John Kania.

46

A CALIFORNIA CHEMEHUEVI POLYCHROME BOTTLENECK BASKET

Attributed to Maria Chapula, Victorville, a globular bowl with just a slight raised rim, four equidistant paired zigzags float across the midsection, a series of horseshoe-shaped motifs above the base.

height 4 3/4in, diameter 8in

\$1,800 - 2,800

Illustrated

Kania, John and Blaugrund, Alan, *Antique Native American Basketry of Western North America*, 2014, Marquand Books, Seattle, p. 104

The attribution to Maria Chapula was made by Santa Fe basket dealer and author, John Kania.

47

A KAWAISU BOTTLENECK BASKET

Tightly woven, with flaring body, high shoulder, and neck decorated in vertical columns of outlined and split arrow point motifs.

height 7 1/4in, diameter 11 3/4in

\$4,000 - 6,000

Illustrated

Kania, John and Blaugrund, Alan, *Antique Native American Basketry of Western North America*, 2014, Marquand Books, Seattle, p. 156



46



45



47

A YOKUTS POLYCHROME BASKET

*Attributed to Mrs. Britches, the deep bowl ringed by two rows of human figures, alternating men and women hand-in-hand, a band of stepped devices below the rim.
height 9in, diameter 21in*

\$25,000 - 35,000

Illustrated

Kania, John and Blaugrund, Alan, *Antique Native American Basketry of Western North America*, 2014, Marquand Books, Seattle, p. 147

The attribution to Mrs. Britches was made by Santa Fe basket dealer and author John Kania.







(alternate view)

49

A YOKUTS POLYCHROME BASKET

Attributed to Mrs. Britches, (Mrs. Dick Topino,) of deep "cooking bowl" form, worked in a bold pattern of two registers of outlined crosses alternating with I-forms. height 9 3/4in, diameter 16 1/4in

\$8,000 - 12,000

Illustrated

Kania, John and Blaugrund, Alan, *Antique Native American Basketry of Western North America*, 2014, Marquand Books, Seattle, p. 147

The attribution to Mrs. Britches was made by Santa Fe basket dealer and author, John Kania.



50

A KAWAIIISU POLYCHROME BASKET

A row of standing human figures in long dresses and hats prominently displayed, framed by a checkered rim band and floating hourglass forms.
height 7 1/4in, diameter 16in

\$7,000 - 10,000

Illustrated

Kania, John and Blaugrund, Alan, *Antique Native American Basketry of Western North America*, 2014, Marquand Books, Seattle, p. 156



(alternate view)



51

**A SOUTHERN NEVADA PAIUTE
POLYCHROME BOTTLENECK BASKET**

An unusually tall example for this form, decorated with naturalistic depictions of a mountain sheep and a deer, butterflies and plant life, framed by crenelated bands, a series of diamonds below the rim.
height 7 1/2in, diameter 7 3/4in

\$3,000 - 4,000

Illustrated

Kania, John and Blaugrund, Alan, *Antique Native American Basketry of Western North America*, 2014, Marquand Books, Seattle, p. 151

52

A PANAMINT BASKET

Extremely finely and tightly woven, depicting a series of mountain sheep alternating with chuckwalla lizards, checkered triangles on the base.

height 3 1/8in, diameter 6 5/8in

\$2,200 - 2,800

Illustrated

Kania, John and Blaugrund, Alan, *Antique Native American Basketry of Western North America*, 2014, Marquand Books, Seattle, p. 151

53

**A PANAMINT POLYCHROME
BOTTLENECK BASKET**

Tightly woven, depicting two staggered rows of diminutive human figures, framed by fretwork bands, a string of beads woven into the rim.

height 3 1/2in, diameter 6 1/4in

\$2,500 - 3,500

Illustrated

Kania, John and Blaugrund, Alan, *Antique Native American Basketry of Western North America*, 2014, Marquand Books, Seattle, p. 151





52

51

53



(alternate view)



(alternate view)

54

A KAWAISU POLYCHROME BOTTLENECK BASKET

Finely woven, four bold serrated bands rising from the base, diagonal tick marks from the rim.
height 5 1/4in, diameter 8in

\$5,000 - 8,000

Provenance

Gottlieb A. Steiner Collection, Pittsburgh, PA

Illustrated

Kania, John and Blaugrund, Alan, *Antique Native American Basketry of Western North America*, 2014, Marquand Books, Seattle, p. 156

A photocopy of the inventory sheet for this basket from the Steiner ledger accompanies the lot.



55

A PANAMINT BASKET

Extremely finely woven, depicting a series of broad-shouldered men standing about the base, wearing hats, alternating with six-pointed star motifs, a rosette on the tondo.
height 2 3/4in, diameter 7 3/4in

\$6,000 - 9,000

Illustrated

Kania, John and Blaugrund, Alan, *Antique Native American Basketry of Western North America*, 2014, Marquand Books, Seattle, pp. 151 and 153

Provenance

Clay Bedford Collection



(alternate view)





56

56

FIVE PANAMINT BASKETS

All very tightly woven, the largest a bottleneck example with zigzag banding; and four miniatures, including another bottleneck, dyed quills added to plant motifs, a bowl worked with images of rabbits, and two finely detailed geometric bowls.
diameter 5 1/4 - 2in

\$3,000 - 5,000

Provenance

James Schwabacher Collection, San Francisco, for the first

Illustrated

Kania, John and Blaugrund, Alan, *Antique Native American Basketry of Western North America*, 2014, Marquand Books, Seattle, p. 151

57

A SOUTHERN NEVADA PAIUTE POLYCHROME BOTTLENECK BASKET

Tightly woven, with flat shoulder and slight raised neck, decorated with complex compositions of serrated forms and hooked motifs, a zigzag band at the top.
height 4in, diameter 8 1/2in

\$3,000 - 4,000

Illustrated

Kania, John and Blaugrund, Alan, *Antique Native American Basketry of Western North America*, 2014, Marquand Books, Seattle, p. 151



57

58

A PANAMINT POLYCHROME BOTTLENECK BASKET

Tightly woven, a diamond chain in alternating colors about the midsection, a band of box motifs below, stepped designs on the shoulder.

height 4 1/2in, diameter 8in

\$2,500 - 3,500

Illustrated

Slater, Eva, *Panamint Shoshone Basketry*, 2000, Sagebrush Press, Morongo Valley, CA, p. 104, fig. 56 "Collection of Indian baskets belonging to Mrs. A.T. Smith of Keeler, Calif. Photographed by Forbes, circa 1912. - Courtesy the Seaver Center for Western History Research, Natural History Museum of Los Angeles county", this basket seen near the bottom-right; also Kania, John and Blaugrund, Alan, *Antique Native American Basketry of Western North America*, 2014, Marquand Books, Seattle, p. 156

59

A PANAMINT POLYCHROME BASKET

A band of conjoined concentric diamond motifs ring the sides. height 4 3/4in, diameter 11 1/2in

\$800 - 1,200

60

A PANAMINT POLYCHROME BOTTLENECK BASKET

Finely and tightly woven, a series of chuckwalla lizards splayed about the body, truncated lizard motifs below the rim, six-pointed stars as accents.

height 5in, diameter 5in

\$3,000 - 4,000

Illustrated

Kania, John and Blaugrund, Alan, *Antique Native American Basketry of Western North America*, 2014, Marquand Books, Seattle, p. 151



57

58

59

60



(alternate view)



(alternate view)

61

A TUBATULABAL POLYCHROME BOTTLENECK BASKET

With flat shoulder and raised neck, decorated in boxed hourglass devices, two bands of conjoined diamonds below, topknots arrayed above.

height 7 1/2in, diameter 13 1/4in

\$10,000 - 15,000

Illustrated

Kania, John and Blaugrund, Alan, *Antique Native American Basketry of Western North America*, 2014, Marquand Books, Seattle, pp. 147 and 159



62

A PANAMINT POLYCHROME BOTTLENECK BASKET

Finely woven with a profusion of naturalistic birds, butterflies, and plant life, a crenelated band about the neck, dyed quills used occasionally as accents.
height 4in, diameter 5 3/4in

\$4,000 - 6,000

Illustrated

Kania, John and Blaugrund, Alan, *Antique Native American Basketry of Western North America*, 2014, Marquand Books, Seattle, p. 151



(alternate view)



63



64



65





63

A PANAMINT POLYCHROME BASKET

Extremely finely and tightly woven, the flaring sides adorned by boxed hourglass devices arranged in diagonal columns, N-motifs and small diamonds as decorative accents.
height 3 1/2in, diameter 8 1/2in

\$3,000 - 4,000

Provenance

Mr. and Mrs. Charles Townsend Baisley, New York, sold at auction by Anderson Galleries, Inc., New York in 1937

Illustrated

Kania, John and Blaugrund, Alan, *Antique Native American Basketry of Western North America*, 2014, Marquand Books, Seattle, pp. 69 and 151

64

A KAWAIIISU POLYCHROME BASKET

Very tightly woven, drawn with five vertical serrated columns enclosed by framing lines, tick marks at the rim, *a vintage tag on the underside reading "G76"*.
height 4in, diameter 7 3/4in

\$1,800 - 2,800

Provenance

Gottlieb A. Steiner Collection, Pittsburgh, PA

Illustrated

Kania, John and Blaugrund, Alan, *Antique Native American Basketry of Western North America*, 2014, Marquand Books, Seattle, p. 156

65

A PANAMINT POLYCHROME BASKET

Very tightly woven, drawn with a series of equidistant vertical columns of stacked arrowhead motifs within thin framing bands, tick marks at the rim.
height 4in, diameter 7 1/4in

\$1,500 - 2,000

Illustrated

Kania, John and Blaugrund, Alan, *Antique Native American Basketry of Western North America*, 2014, Marquand Books, Seattle, pp. 12 and 151



(alternate view)



(alternate view)

66

A YOKUTS POLYCHROME BOTTLENECK BASKET

Tightly woven, the flaring body showing pairs of human figures alternating with panels of stacked arrow points, more men joined by dogs ring the flat shoulder, red wool tufts and the remains of topknots as complements.

height 6in, diameter 10 1/2in

\$12,000 - 18,000

Illustrated

Kania, John and Blaugrund, Alan, *Antique Native American Basketry of Western North America*, 2014, Marquand Books, Seattle, p. 147



A KAWAIIISU POLYCHROME BASKET

Attributed to *Martino Marcus Hicks*, very finely and tightly woven, with sharp shoulder and receding neck, decorated in diamond lattice panels and floating diamond complements. height 8 1/4in, diameter 11in

\$6,000 - 9,000

Illustrated

Kania, John and Blaugrund, Alan, *Antique Native American Basketry of Western North America*, 2014, Marquand Books, Seattle, p. 104

The attribution comes in the form of a letter to the collector from a member of the trade: "The lady I bought it from had it in her collection for more than 10 years. She and another collector in Nevada said it was woven by 'Martino Marcus Hicks' 1890 to 1900. She was reputed to be one of the finest Kawaiisu weavers."



(alternate view)



(alternate view)





69



68



70



68 (alternate view)



69 (alternate view)



70 (alternate view)

68

A PANAMINT POLYCHROME OVAL BASKET

Extremely finely woven, solid color serrated devices and outlined floating diamonds face off across the sides, a mirror image of more diamonds at both ends.

height 3 3/4in, length 7 3/4in

\$2,000 - 3,000

Illustrated

Kania, John and Blaugrund, Alan, *Antique Native American Basketry of Western North America*, 2014, Marquand Books, Seattle, p. 156

69

A SOUTHERN NEVADA PAIUTE POLYCHROME BASKET

Possibly the work of Mary Ann Howell, very finely and tightly woven, showing three vertical columns of diamond lozenges, distinct diamond motifs and sawtooth devices float in the reserves.

height 4in, diameter 5 3/4in

\$3,000 - 4,000

Illustrated

Kania, John and Blaugrund, Alan, *Antique Native American Basketry of Western North America*, 2014, Marquand Books, Seattle, p. 151

The potential attribution to Mary Ann Howell was made by Santa Fe basket dealer and author, John Kania.

70

A KAWAISU POLYCHROME BOTTLENECK BASKET

Showing a pair of angular hooked meanders on the sides, outlined diamonds on the flat shoulder, tick marks on the neck.

height 4 1/2in, diameter 6 1/2in

\$2,000 - 3,000



(alternate view)

71

A YOKUTS POLYCHROME OVAL BASKET

Attributed to Mrs. Britches, (Mrs. Dick Topino,) woven with surmounted panels of outlined crosses, the bands outlining these motifs marked by complementary serrates. height 7 3/4in, width 15 1/4in, length 19 3/4in

\$8,000 - 12,000

Illustrated

Kania, John and Blaugrund, Alan, *Antique Native American Basketry of Western North America*, 2014, Marquand Books, Seattle, p. 147

The attribution to Mrs. Britches was made by Santa Fe basket dealer and author, John Kania.



72

A RARE AND UNUSUAL KAWAISU BOWL

The deep flaring bowl decorated with pairs of human figures standing hand-in-hand, vertical stripes of grasshopper stitching create a distinct and atypical aesthetic.
height 8in, diameter 16in

\$6,000 - 9,000

Illustrated

Kania, John and Blaugrund, Alan, *Antique Native American Basketry of Western North America*, 2014, Marquand Books, Seattle, pp. 156, 158 and 40 (detail)



(alternate view)





(alternate view)



73



74



75



73

A YOKUTS POLYCHROME BOWL

Attributed to Mrs. Dick Francisco, very tightly woven, four topknot-appended vertical columns evenly spaced about the sides, a diamond rattlesnake band and checkered ticking below the rim.
height 6in, diameter 14 1/2in

\$4,000 - 6,000

Illustrated

Kania, John and Blaugrund, Alan, *Antique Native American Basketry of Western North America*, 2014, Marquand Books, Seattle, p. 147

The attribution to Mrs. Dick Francisco was made by New York-based dealer, Marcy Burns, a specialist in Native American basketry.

74

A YOKUTS POLYCHROME BOTTLENECK BASKET

Attributed to Mrs. Dick Francisco, tightly woven, with high flat shoulder and straight raised neck, four broad design panels appended by topknot motifs converge towards the mouth, staircase devices below the rim.
height 6in, diameter 8 1/2in

\$3,000 - 5,000

Illustrated

Kania, John and Blaugrund, Alan, *Antique Native American Basketry of Western North America*, 2014, Marquand Books, Seattle, p. 147 and 148

The attribution to Mrs. Dick Francisco was made by Bob Adams, a collector/dealer who had extensive experience and knowledge of California Central Valley and Foothills basketry weaving traditions. Included with the lot is a postcard of this and three other baskets "from the collection of Bob and Carol Adams".

75

THREE YOKUTS BASKETS

Including a diamond lattice bowl, attributed to Minnie Wilcox; a second bowl worked in three triangular configurations; and a miniature bottleneck, stepped bands from base to rim.
diameter 6, 7 1/8 and 4 1/4in

\$1,500 - 2,000

Provenance

Frank Latta Collection, Bakersfield, CA, for first

Illustrated

Kania, John and Blaugrund, Alan, *Antique Native American Basketry of Western North America*, 2014, Marquand Books, Seattle, p. 147 for the two bowls



76



77



78

76

A PANAMINT BASKET

Finely woven, the deep bowl drawn with four opposing bold stepped diamond lozenges, negative diamond motifs placed within each. *height 5 1/2in, diameter 10in*

\$3,000 - 4,000

Illustrated

Kania, John and Blaugrund, Alan, *Antique Native American Basketry of Western North America*, 2014, Marquand Books, Seattle, p. 151

77

A PANAMINT POLYCHROME TRAY

Attributed to Isabel Hanson, decorated with a band of conjoined tightly constricted concentric diamond motifs, double diamond elements floating on the wide base. *height 3in, diameter 11 1/4in*

\$2,000 - 3,000

The attribution to Isabel Hanson was made by Santa Fe basket dealer and author, John Kania.

78

A KAWAISU POLYCHROME BASKET

Tightly woven, with four solid serrated devices rising from the base, a framing line overhead and diagonal ticking to the rim, a vintage tag reading "G80" on the interior center. *height 3 5/8in, diameter 10in*

\$2,000 - 3,000

Provenance

Gottlieb A. Steiner Collection, Pittsburgh, PA

Illustrated

Kania, John and Blaugrund, Alan, *Antique Native American Basketry of Western North America*, 2014, Marquand Books, Seattle, p. 156

A photocopy of the original collection inventory ledger page for this basket is included with the lot.



76



77



78

79

A WESTERN MONO POLYCHROME BOTTLENECK BASKET

Of unusually flattened form, diamond chains run vertically and are accented by a variety of small filler devices.
height 3 1/4in, diameter 12in

\$2,500 - 3,500

Illustrated

Kania, John and Blaugrund, Alan, *Antique Native American Basketry of Western North America*, 2014, Marquand Books, Seattle, p. 161

80

A YOKUTS POLYCHROME BOTTLENECK BASKET

Showing three diamond bands on the sides and flat shoulder, a row of crosses on the neck.
height 6in, diameter 10in

\$2,200 - 2,800

Illustrated

Kania, John and Blaugrund, Alan, *Antique Native American Basketry of Western North America*, 2014, Marquand Books, Seattle, p. 147



79



80



81



82



79 (alternate view)



80 (alternate view)



81 (alternate view)



82 (alternate view)

81

A YOKUTS POLYCHROME BOTTLENECK BASKET

Attributed to *Minnie Hancock*, unusual in its design, showing two rows of women, some hand-in-hand, the others standing alone, repeated cruciform lozenges as accents.
height 5 3/3in, diameter 9in

\$3,000 - 5,000

Illustrated

Kania, John and Blaugrund, Alan, *Antique Native American Basketry of Western North America*, 2014, Marquand Books, Seattle, p. 147

The attribution to Minnie Hancock was made by Santa Fe basket dealer and author, John Kania.

82

A YOKUTS POLYCHROME BOTTLENECK BASKET

Attributed to *Mrs. Amateros*, *Porterville*, the high sides, flat shoulder, and neck decorated in repeated rows of small floating diamonds and cruciform accents.
height 6 3/4in, diameter 11in

\$3,000 - 4,000

Illustrated

Kania, John and Blaugrund, Alan, *Antique Native American Basketry of Western North America*, 2014, Marquand Books, Seattle, p. 147

The attribution to Mrs. Amateros comes in the form of a letter from the vendor, a member of the trade, dating the basket to circa 1870 and describing the pattern as the "Kingsnake design".

A MONO LAKE PAIUTE BEADED BASKET

Possibly the work of Tina Charlie, unusual in that it is a twined example, the beaded surface alternating vertical rows of serrated motifs and diamond-filled chevrons, a pinwheel design on the base. *height 6 1/4in, diameter 8 1/2in*

\$6,000 - 8,000

Provenance

Ron Munn auction, Albuquerque, NM, 1998, at which time a tentative attribution to Tina Charlie had been made. A note apparently from the vendor in the Munn auction states: "This basket was submitted for judging in the 1929 Field Day Fair in Yosemite, California. The 1929 fair was the last one, as in 1930 the Great Depression occurred. The combination of a depressed economy and the death of Abe Cohn and other aficionados and promoters of basket making contributed to a declining of the market for some 40 years."

Illustrated

Kania, John and Blaugrund, Alan, *Antique Native American Basketry of Western North America*, 2014, Marquand Books, Seattle, p. 169, plates 91 and 92

The basket is depicted in two vintage photos from circa 1929, reproductions of which accompany this lot.







84 (alternate view)



85 (alternate view)



86 (alternate view)

84

A MONO LAKE PAIUTE BEADED BASKET

Attributed to *Nellie Charlie*, fully beaded and displaying a succession of arrows along the midsection and lower shoulder, diamond bands and lozenges as complements, a five-pointed star on the base.
height 4 1/2in, diameter 9 3/4in

\$4,000 - 6,000

Illustrated

Kania, John and Blaugrund, Alan, *Antique Native American Basketry of Western North America*, 2014, Marquand Books, Seattle, p. 169

Compares Favorably

Bates, Craig, *Tradition and Innovation*, 1990, The Yosemite Association, Yosemite, CA, p. 149, ill. 276, for examples of beaded baskets documented as made by Tina Charlie with similar design choices, most notably the prominent arrow motifs

85

AN UNUSUAL MONO LAKE PAIUTE BEADED SQUARE BASKET

Attributed to *Maggie Howard*, fully beaded in a pattern of diamond lozenges, zigzags and arrow points, the base dotted with a series of tiny blossoms and more diamonds.
height 4in, width 7in

\$3,000 - 4,000

Illustrated

Kania, John and Blaugrund, Alan, *Antique Native American Basketry of Western North America*, 2014, Marquand Books, Seattle, p. 169

The attribution to Maggie Howard was made by Santa Fe basket dealer and author, John Kania. In a letter to the collector, Kania points out "This is surely one of the most unusual yet spectacular beaded baskets we have ever encountered. It was originally purchased by Mrs. Grace Irons in 1957, at Bishop, California... 'from the Paiute Indians' according to an old note." [cataloguer note: the tag referenced is not available] ...Square baskets are technically one of the most difficult shapes to make using the coiling technique. In conversation with Craig Bates, curator at the Yosemite Museum, he states he has only seen one other example and that was in the Schwabacher collection; unfortunately the name of its maker is unknown."

A MONO LAKE PAIUTE BEADED BASKET

Attributed to *Nellie Charlie*, fully beaded on the globular sides and base, showing a series of arrows on the upper and lower shoulders, complemented by diamond chains and a five-pointed star on the base.

height 4 7/8in, diameter 7 1/2in

\$3,500 - 5,500

Illustrated

Kania, John and Blaugrund, Alan, *Antique Native American Basketry of Western North America*, 2014, Marquand Books, Seattle, p. 169

Compares Favorably

Bates, Craig, *Tradition and Innovation*, 1990, The Yosemite Association, Yosemite, CA, p. 149, ill. 276, for examples of beaded baskets documented as made by Tina Charlie with similar design choices, most notably the prominent arrow motifs

An evaluation of the basket and Ms. Charlie's artistry by basket specialist John Kania accompanies the lot.



84



85



86



87 (alternate view)



88 (alternate view)



89 (alternate view)

87

A MONO LAKE PAIUTE BEADED LIDDED BASKET

Attributed to Nellie Charlie, particularly large for a beaded basket, the globular body and lid completely covered with bands of serrated motifs and diamond devices, a multi-pointed star on the base.
height 7in, diameter 10in

\$3,000 - 4,000

Illustrated

Kania, John and Blaugrund, Alan, *Antique Native American Basketry of Western North America*, 2014, Marquand Books, Seattle, p. 169

The attribution to Nellie Charlie was made by Santa Fe basket dealer and author, John Kania.

88

A MONO LAKE PAIUTE BEADED BASKET

Attributed to Nellie Charlie, the fully-beaded bowl worked in an all-over pattern of complementary vertical zigzags, a five-pointed star on the base.
height 4in, diameter 8 1/2in

\$3,000 - 4,000

Illustrated

Kania, John and Blaugrund, Alan, *Antique Native American Basketry of Western North America*, 2014, Marquand Books, Seattle, p. 169

The attribution to Nellie Charlie was made by Craig Bates, former Curator of Ethnography at the Yosemite Museum. In a letter accompanying this lot, Bates writes "This basket is identical in construction to six baskets in the Yosemite Museum collection which are attributed to Nellie Charlie. Mrs. Charlie's beadwork style is distinctive, as is her single-rod coiling (including a slightly reduced stitch count and size near the start of the basket). Both of these attributes are found on the basket under discussion here...The beaded star pattern on the basket's base is nearly identical to those on the bottom of these same two beaded baskets in the Yosemite Museum collection....Nellie Charlie (1867-1965) was a prominent Mono Lake Paiute weaver who competed regularly in the Indian Field Days basketry contest during the 1920's.

A prolific weaver and accomplished beadworker, Mrs. Charlie produced beaded baskets from at least as early as the 1920s, and possibly as late as the last decade of her life. She created many patterns not generally used by her contemporaries. Her beaded baskets are among the finest produced in the Mono Lake region."

89

A MONO LAKE PAIUTE BEADED BASKET

Attributed to Nellie Charlie, the fully-beaded globular bowl showing a series of complementary vertical zigzag bands with interspersed horizontal striping, a five-pointed star on the base. *height 3 3/4in, diameter 6 1/2in*

\$2,500 - 3,500

Illustrated

Kania, John and Blaugrund, Alan, *Antique Native American Basketry of Western North America*, 2014, Marquand Books, Seattle, p.

Regarding the attribution to Nellie Charlie, see notes for lot 88





91 (alternate view)



90 (alternate view)



92 (alternate view)

90

A MONO LAKE PAIUTE BEADED BASKET

Possible the work of Sally Jackson, of bottleneck form, the exterior fully covered in beadwork and displaying spreadwinged eagles, stars, and diamond lozenges in various forms, a ring of arrowhead motifs just above the base.

height 8in, diameter 9 1/2in

\$3,000 - 4,000

Illustrated

Kania, John and Blaugrund, Alan, *Antique Native American Basketry of Western North America*, 2014, Marquand Books, Seattle, p. 169

The potential attribution to Sally Jackson was made in 1994 by a member of the trade with a specialization in baskets.

91

A MONO LAKE PAIUTE BEADED OVAL BASKET

Possibly the work of Sally Jackson, fully beaded and displaying federal eagle images, triangles, diamonds, and flowering plants, a ring of arrowhead motifs just above the base, finished with multi-pointed concentric stars on the underside.

height 3 1/2in, diameter 9 3/4in

\$3,000 - 4,000

92

A MONO LAKE PAIUTE BEADED BOTTLENECK BASKET

Possibly the work of Sally Jackson, of bottleneck form, the exterior fully covered in beadwork and displaying spreadwinged eagles, stars, diamond lozenges, and flowering plants, a ring of arrowhead motifs just above the base.

height 4 3/4in, diameter 7 3/4in

\$3,000 - 4,000

Illustrated

Kania, John and Blaugrund, Alan, *Antique Native American Basketry of Western North America*, 2014, Marquand Books, Seattle, p. 169

The potential attribution to Sally Jackson comes from the similarity of design motifs in this basket with those seen in lot 90



91

90

92



93 (alternate view)



94 (alternate view)



95 (alternate view)

93

A MONO LAKE PAIUTE BEADED LIDDED BASKET

Celia Arnot, the massive basket and lid completely beaded in a profusion of decorative motifs, from a spiral at the finial to a multi-pointed star on the base, the pattern is realized as series of zigzags and serrated bands filled by small geometric devices.
height 8 1/4in, diameter 13in

\$3,000 - 4,000

Exhibited

Nevada Museum of Art, *Tahoe: A Visual History*, August 22, 2015 through January 10, 2016

A photograph of this basket was published by the Museum to accompany the exhibition, labelled "*Celia Arnot, Beaded Degikup*, circa 1965, Collection of Bronnie and Alan Blaugrund". It is included with this lot.

94

A MONO LAKE PAIUTE BEADED BASKET

The sizable bowl fully beaded, displaying a central panel of concentric and conjoined serrated diamond lozenges on a central axis, a zigzag band below and a seven-pointed star on the base.
height 5in, diameter 9in

\$2,500 - 3,500

Compares Favorably

A tentative attribution to Carrie Bethel could be made for this basket, based in part on a comparison to lot 95 in design choices and the bead color palette used, although the weave is significantly coarser.

THREE MONO LAKE PAIUTE BEADED BASKETS

Attributed to *Carrie Bethel*, including a mid-size bowl and two miniatures, all fully beaded, the largest with a succession of concentric diamond lozenges on a central axis, a five-pointed star on the base; the miniatures done with more variations of diamond motifs and zigzag or slanted line banding, height 3, 1 and 1 1/8in, diameter 5 1/2, 1 1/2 and 1 5/8in

\$4,000 - 5,000

Illustrated

Kania, John and Blaugrund, Alan, *Antique Native American Basketry of Western North America*, 2014, Marquand Books, Seattle, p. 169

The attribution to Carrie Bethel for the largest example was made by the vendor, a specialist in California basketry.

Compares Favorably

For the two miniatures, see Bates, Craig and Lee, Martha, *Tradition and Innovation*, 1990, The Yosemite Association, Yosemite, CA, p. 137, ill. 255 for comparable miniature baskets by Bethel: "Carrie Bethel made at least a hundred of these small beaded baskets between the 1920s and 1970s, selling them for 25 cents to \$2.50. The baskets are finely made and similar in size and shape, although patterns vary considerably."



93

94

95



97 (alternate view)



96 (alternate view)



98 (alternate view)

96

A MONO LAKE PAIUTE BEADED BASKET

The fully-beaded globular basket worked in two rows of butterflies and flowering plants, concentric circles define the base.
height 3 3/4in, diameter 5 1/2in

\$1,800 - 2,800

97

A MONO LAKE PAIUTE BEADED BASKET

Probably the work of Nellie Charlie, the globular basket fully beaded, butterflies and flowering plants alternate across the midsection, zigzag banding and stripes create a frame, a six-pointed star on the base.
height 5in, diameter 7 3/4in

\$4,000 - 6,000

Illustrated

Kania, John and Blaugrund, Alan, *Antique Native American Basketry of Western North America*, 2014, Marquand Books, Seattle, p. 169

98

A MONO LAKE PAIUTE BEADED BOWL

Attributed to Tina Charlie, the globular bowl full beaded and displaying images of an Indian man wearing a feather bonnet and holding a staff, these alternate with a pair of naturalistic butterflies, a four-pointed concentric star on the base.
height 3 1/4in, diameter 6in

\$5,000 - 7,000

The attribution to Tina Charlie was made by Brian Bibby, noted basket specialist and author. Ms. Charlie was clearly amongst the most accomplished weavers in the Yosemite area, many of her baskets winning prizes back in the Yosemite Indian Field Days and June Lake Field Days basket competitions in the years 1916-1930. In more recent times, several of her baskets sold by Bonhams from the Ella Cain Collection achieved world-record auction prices.

99

A MONO LAKE PAIUTE BEADED MINIATURE WATER BOTTLE

The twined container fully beaded with vertical rows of diamonds and serrated-edge devices, zigzags about the neck and a pinwheel design on the base.
height 6 3/4in, diameter 3 3/4in

\$1,500 - 2,000



(alternate view)



96

98

97

99

100

TWO MONO LAKE PAIUTE BEADED BASKETS

The largest by Minnie Mike, each with lid and fully beaded, similar with busy patterns of geometric motifs on a white background. diameter 6 and 4 1/2in

\$1,800 - 2,400

A handwritten note inside the largest basket indicates "Made by my Aunt Minnie Mike fr. Lee Vining - Approx. yr. 1945. Expired in April 1, 19? Dorothy Turner's Mother"

101

FOUR MONO LAKE PAIUTE BEADED BASKETS

All fully beaded in distinct geometric patterns, including zigzags, diamonds, arrow points and serrated elements. diameter 6 - 3 1/2in

\$1,800 - 2,400

102

FIVE WESTERN MINIATURE BEADED BASKETS

Including three Mono Lake Paiute examples, the largest worked in diamond patterns, the beads threaded on individual stitches unlike most Paiute beadwork, *Norman DeLorme*; two others in serrated banding or diamond motifs; and two micro-miniatures, *by Apache artist Tu Moonwalker*. diameter 3 1/2 - 7/8in

\$1,500 - 2,000





100 (alternate view)

101 (alternate view)



102

103

A MONO LAKE PAIUTE POLYCHROME BASKET

The globular bowl with compositions of diamond lozenges set with chevron and triangle appendages, alternating with columns of winged diamonds.

height 5in, diameter 8in

\$4,000 - 6,000

Illustrated

Kania, John and Blaugrund, Alan, *Antique Native American Basketry of Western North America*, 2014, Marquand Books, Seattle, p. 168

A 1999 letter from Craig Bates, former Curator of Ethnography at the Yosemite Museum, accompanies this lot. In it, Bates speaks of the technical features of the basket and adds "The basket is typical of those made in the Mono Lake/Yosemite region between the 1920s and 1970...The basket is very nicely made, and obviously the work of a master weaver." At that time Bates was yet unable to identify the weaver.

104

A MONO LAKE PAIUTE POLYCHROME BASKET

Probably the work of Carrie Bethel, finely woven and of "degikup" form, the ornate pattern consisting of stacked V-form bars and accents to resemble stylized blossoms, framed by a zigzag band appended by capped diamonds.

height 3 1/4in, diameter 6 1/4in

\$6,000 - 9,000

Illustrated

Kania, John and Blaugrund, Alan, *Antique Native American Basketry of Western North America*, 2014, Marquand Books, Seattle, p. 168

The attribution to Carrie Bethel was made by Santa Fe basket dealer and author, John Kania.

105

A MONO LAKE PAIUTE BASKET

Attributed to Leanna Tom, the globular bowl decorated with opposing serrate-edged triangles and geometric compositions, these latter terminating in a motif strongly suggesting a bird in flight.

height 4 1/2in, diameter 9in

\$3,000 - 4,000

The attribution to Leanna Tom was made by Marvin Cohodas, Associate Professor in the Department of Fine Arts at the University of British Columbia. In an accompanying document Cohodas writes "The three-rod coiled Mono Lake Paiute basket pictured below, 9" in diameter, may be attributed to Leanna Tom, one of the most important weavers and a frequent prize-winner in the Yosemite and June Lake Field Days. This basket was probably woven between 1915 and 1925."



103



104



105

106

A MONO LAKE PAIUTE POLYCHROME BASKET

Attributed to Carrie Bethel, finely and tightly woven, the globular bowl decorated with opposing pairs of stylized floral compositions and topknot-appended diamond lozenges.
height 5 1/4in, diameter 8in

\$8,000 - 12,000

Illustrated

Kania, John and Blaugrund, Alan, *Antique Native American Basketry of Western North America*, 2014, Marquand Books, Seattle, pp. 166 and 168

The attribution to Carrie Bethel was made by Craig Bates, former Curator of Ethnography at the Yosemite Museum. In a document accompanying the basket, Bates writes: "Some months ago I compared your basket to documented baskets in the Yosemite Museum collection, and it was by doing this that I was able to attribute it to Carrie Bethel. The way in which the wrapping of the clock spring start is done, and the first few wrappings and stitches at the addition of the rods to the clock spring start are similar only to baskets made by Carrie Bethel..."

The designs on your basket are unique, which is what one would expect of a basket woven by Carrie Bethel. Bethel had a seemingly inexhaustible repertoire of unique design ideas on her baskets...Alma Blaver told me that Bethel told her that sometimes she received the designs for her baskets in her dreams. By this she did not imply any sort of religious inspiration, it was, as I understand it, part of Bethel's creative process.



...I was unaware of the existence of this basket until a few years ago, when it was purchased by a private collector from a relative of the original collector, James H. Schwabacher. As you know, Mr. Schwabacher amassed a large collection (over 400 pieces) of baskets during his lifetime. In the 1970's, the family sold a portion of the collection (primarily of non-central California baskets), and later donated the bulk of the collection to the Yosemite Museum.

Mr. Schwabacher maintained a ranch near Cupertino...this relative who sold the basket said that this basket was taken to the ranch by Mr. Schwabacher years ago, and always was kept on the bureau in his bedroom...I assume that, since Schwabacher kept all of the other baskets in his collection in his special "Indian Room" on one of the upper rooms in his San Francisco home, that he considered this basket to be very special...

In any event, your basket is a fine representation of the artistry of Carrie Bethel. Historically, it is a tangible reminder of the link between Bethel and her patron, James H. Schwabacher, as well as being a unique example of the creativity of the weavers of the Yosemite-Mono Lake region."



(alternate view)



107

A MONO LAKE PAIUTE POLYCHROME BASKET

Tina Charlie, finely woven, with a pair of winged diamond devices alternating with compositions of outlined double diamonds. *height 4 1/4in, diameter 9 1/2in*

\$8,000 - 12,000

Provenance

The Ella Cain Collection, Bridgeport, CA; sold by Bonhams & Butterfields on 12/5/05, lot 1128

Illustrated

Haas, Jim and Lindbergs, Ingmars, *The Ella M. Cain Collection of Mono Lake Paiute Basketry*, 2005, Bonhams & Butterfields, San Francisco, p. 32, along with a reproduction of a vintage photo of Tina Charlie seated with this basket during Indian Field Days in June Lake, California.

Accompanying the lot are two handwritten tags from Ella Cain reading "Prize winning basket June Lake. (See photo). Basket in front of maker Tillie (sic) Young Charlie", and "5D Tillie (sic) Young Charlie, this basket took 4th prize June Lake Calif. Field Day. Tillie also made 1D - the most beautiful basket in collection. In a case in Bridgeport Cal museum." The identifier 1D refers to lot 1104 in the Bonhams & Butterfields auction, a basket that at that time sold for the world auction record price of \$336,250.



107



108

108

A WASHOE POLYCHROME BURDEN BASKET

Attributed to Scees Bryant, a small-scale example, the twined cone with a pair of outlined design bands worked as a succession of conjoined parallelograms, an openwork section below the rim. height 9in, diameter 9 1/4in

\$3,000 - 5,000

Illustrated

Kania, John and Blaugrund, Alan, *Antique Native American Basketry of Western North America*, 2014, Marquand Books, Seattle, p. 166

The attribution to Scees Bryant was made by Marvin Cohodas, Professor in the Department of Fine Arts at the University of British Columbia. In an accompanying document he writes: "The twined Washoe miniature burden basket pictured below...was woven by Scees Bryant Possock, sister-in-law of Louisa Keyser (Dat So La Lee).

This basket forms part of the Amy Cohn miniature collection.

Although it was not originally entered in the ledger of this collection compiled by Abe Cohn's second wife, Margaret Cohn, this basket was later entered as MC181, and the design was interpreted as 'Campfire and Ponds'. The basket also features an Emporium Company sticker with number 3545, which suggests it was woven in 1915, four years before Scees' death."

The original "Certificate of Identification" from the Emporium Collection of Amerind Art in Carson, Nevada is included with the lot.



107



108

109

A FINE AND IMPORTANT WASHOE BASKET

Scees Bryant, extremely finely woven in “degikup” form, with staggered rows of sawtooth diamond lozenges, a negative cross at the center of each.
height 8 3/4in, diameter 12 1/2in

\$50,000 - 80,000

Provenance

An old California collection; sold by Butterfields & Butterfields, December 10, 1996, lot 678

Illustrated

Cohodas, Marvin, *Degikup, Washoe Fancy Basketry 1895-1935*, The Fine Arts Gallery of the University of British Columbia, 1979, fig. 30, p. 31. In his section on Scees Bryant, Dat-so-la-lee’s sister-in-law, Cohodas reproduces a photo from Abe Cohn’s Emporium Company, Carson City, Nevada, showing a group of six baskets. The caption reads “The only baskets known to have been made by Ceese” (sic). Cohodas reports “On the basis of stylistic features...it would appear that most, if not all of the baskets in this photograph date between 1900 and 1905.” At that writing he points to only ten documented baskets by Bryant, with several others attributed to her.



“Scees’s stylistic approach may be best characterized as an imitation of Dat so la lee’s work with certain individual characteristics. Like Dat so la lee, Scees elaborated the *degikup* through fine technique, large size, sculptural and elegant shape and complex design... While Scees’s earlier baskets are more individualized, her later works are such careful imitations that they might easily be confused with Dat so la lee’s own work.”; also Kania, John and Blaugrund, Alan, *Antique Native American Basketry of Western North America*, 2014, Marquand Books, Seattle, cover and pp. 164 and 165





109 (alternate view)



110 (alternate view)

110

A WASHOE POLYCHROME BURDEN BASKET

Dat so la lee (Louisa Keyser,) very finely and tightly woven for a utilitarian basket type, decorated with twin panels of diagonal serrated devices separated and framed by pairs of ticked bands, a thick rod reinforcing the rim, a vintage tag affixed to the interior reading "F59".

height 19in, diameter 18in

\$10,000 - 15,000

Provenance

Gottlieb A. Steiner Collection, Pittsburgh, PA

Illustrated

Zigmond, Maurice L., *Gottlieb [sic] Adam Steiner and the G.A. Steiner Museum, Journal of California and Great Basin Anthropology*, Vol. 1, No. 2, p. 328, fig. 6; also Kania, John and Blaugrund, Alan,

Antique Native American Basketry of Western North America, 2014, Marquand Books, Seattle, p. 166



In a document regarding this basket, Marvin Cohodas, Professor in the Department of Fine Arts, at the University of British Columbia writes: "The twined Washoe *mokeewit* (burden basket) pictured below, with designs in sunburned willow and bracken fern on a willow ground, is documented by a Cohn Emporium certificate as the work of Louisa Keyser, better known as "Datsolalee." The design of alternating bands is standard for Keyser's burden baskets, both miniature and full-sized, which she produced with increasing frequency after 1910. This burden basket was likely woven shortly before it was purchased, in 1914, by G.A. Steiner."

The original Emporium Company document referred to is included in this lot.



111

A WASHOE POLYCHROME BASKET

Attributed to *Tootsie Dick Sam*, a zigzag band of finely serrated devices rings the sides, four opposing diamond-form lozenges fill the reserves.
height 5 3/8in, diameter 8 1/4in

\$5,000 - 8,000

Illustrated

Kania, John and Blaugrund, Alan, *Antique Native American Basketry of Western North America*, 2014, Marquand Books, Seattle, p. 164

The attribution to Tootsie Dick Sam was made by Marvin Cohodas, Associate Professor in the Department of Fine Arts at the University of British Columbia, in an accompanying document he writes: The three-rod *degikup* pictured below...may be securely attributed to Tootsie Dick Sam of Antelope Valley.

Because Tootsie Dick sold her baskets through the Cohn Emporium in Carson City, Nevada (as well as through local shopkeepers in Antelope Valley,) many documented examples of her work are known and these are generally well dated. On this basis the basket pictured below was likely woven around 1913-1916."



112

A WASHOE POLYCHROME BASKET

Attributed to Maggie Mayo James, woven in *degikup* form, a sharply serrated zigzag band rings the sides, complemented by cruciform lozenges and other filler devices.
height 4in, diameter 7 3/4in

\$5,000 - 8,000

The attribution to Maggie Mayo James was made by Marvin Cohodas, Associate Professor in the Department of Fine Arts at the University of British Columbia. In an accompanying document he wrote: The three-rod *degikup* pictured below...may be reliably attributed to Maggie Mayo James of Carson Valley, one of the most prolific and innovative Washoe weavers. The technique, shape, and arrangement of design are all carried out in her characteristic manner. On the basis of dated examples, it appears that this basket was woven between 1913 and 1918.”



(alternate view)



(alternate view)



113

A WASHOE BASKET

Dat so la lee (Louisa Keyser,) of *degikup* form, finely woven and decorated from base to rim with four equidistant pairs of vertical zigzag bands.
height 5in, diameter 7 1/4in

\$15,000 - 25,000

Provenance

Dr. S.L. Lee, Carson City, NV; gifted to W.E. Casson, Carson City, NV

Illustrated

Ross, Christopher, *Dat So La Lee and the Myth Weavers*, in *Nevada Magazine*, Sept/Oct issue, 1989, p. 32 (title page); Kania, John and Blaugrund, Alan, *Antique Native American Basketry of Western North America*, 2014, Marquand Books, Seattle, pp. 28 and 164; also in three publicity photos from the Cohn Emporium Company, one showing *Dat so la lee* seated with a number of her baskets in the foreground (this basket seen to the far right), reproductions of which are included here

Exhibited

Tahoe: a Visual History, Nevada Museum of Art, Reno, NV, August 22 through January 10, 2016

Two photocopied pages from the original inventory of the Cohn Emporium store detailing this basket accompany the lot.

In a document concerning the basket, Marvin Cohodas, Associate Professor in the Department of Fine Arts at the University of British Columbia writes: "The Washoe three-rod *degikup* pictured below... is the work of Louisa Keyser (*Dat-so-la-lee*). This basket is listed as L.K. 1 in the Cohn ledger of Louisa Keyser's baskets, identified both by collection and by design. Because it was first compiled over two decades later, this ledger contains many inaccuracies. In particular, those baskets woven before 1899 when Amy Cohn instituted regular recording of information on certificates, are quite inaccurate in regard to dates and dimension. L.K. 1 was likely woven in 1896 or 1897.

Although the basket was initially sold to the major collector of Washoe baskets in Carson City, Dr. S.L. Lee around 1899, it was later presented to Carson City resident W.E. Casson, and consequently did not remain in the Lee collection now housed in the Nevada State Museum."





The weaver Dat So La Lee, Louisa Keyser, pictured with the present lot, far right



(alternate view)





114



115

114

A WASHOE POLYCHROME BASKET

Attributed to "Squaw Addie", possibly Addie Dick, the deep "cooking" basket decorated with a succession of curving diagonal bands in checkered, diamond and hourglass motifs, accented by occasional filler devices.
height 10in, diameter 19in

\$3,000 - 5,000

Provenance

Gottlieb A. Steiner Collection, Pittsburgh, PA

Illustrated

Kania, John and Blaugrund, Alan, *Antique Native American Basketry of Western North America*, 2014, Marquand Books, Seattle, p. 164

The attribution to this Washoe weaver was made by Marvin Cohodas, Professor in the Department of Fine Arts at the University of British Columbia. In an accompanying document, Cohodas writes: "The three-rod Washoe *singam* (cooking basket shape) pictured below...is documented by a Cohn Emporium certificate as the work of 'Johnnie Pokerbilly's Squaw Addie,' who may be Addie Dick. The Emporium accession number is 3202 and the accompanying certificate indicates that this basket was acquired by the Cohns in 1912...In 1914, this basket was purchased, along with approximately sixty other baskets, including Louisa Keyser's famous 'Beacon Lights', by G. A. Steiner."

The original Cohn Emporium certificate accompanies this lot.



114 (alternate view)

115

A WASHOE POLYCHROME BASKET

Attributed to Maggie James, its design alternating geometric compositions of triangular and linear attachments with sets of stepped lines and arrow-like motifs.
height 7in, diameter 13in

\$5,000 - 8,000

Illustrated

Kania, John and Blaugrund, Alan, *Antique Native American Basketry of Western North America*, 2014, Marquand Books, Seattle, p. 164

The attribution to Maggie James was made by Marvin Cohodas, Professor in the Department of Art History, Visual Art, and Theory at the University of British Columbia. In an accompanying document, Cohodas writes: "The three-rod Washoe *degikup* pictured below... may be attributed to Maggie Mayo James of Carson Valley. Maggie James, daughter of Captain Pete Mayo and step daughter of Sarah Mayo, was one of the most skilled, inventive, and influential Washoe weavers, a leader of the weavers of Carson Valley and Alpine county.

The basket shape, technique, design and arrangement are all entirely consistent with her work. The shape and design arrangement suggest Maggie James likely wove this basket between 1910 and 1915."



115 (alternate view)



(alternate view)

116

A WASHOE POLYCHROME BASKET

Attributed to Maggie Mayo James, extremely tightly woven in degikup form, displaying a distinct pattern of finely serrated hooked X-forms.

height 3 1/2in, diameter 6 1/4in

\$5,000 - 8,000

Provenance

Ben Lancaster (Chief Greyhorse), Coleville, CA; Lloyd Chichester, Coleville, CA

Illustrated

Kania, John and Blaugrund, Alan, *Antique Native American Basketry of Western North America*, 2014, Marquand Books, Seattle, p. 164

The attribution to Maggie Mayo James was made by Marvin Cohodas, Professor in the Department of Fine Arts at the University of British Columbia. In an accompanying document he writes: The three-rod Washoe *degikup* pictured below...may be attributed to Maggie Mayo James of Carson Valley, one of the most skilled, inventive, and influential Washoe weavers. The basket shape, technique, design, and arrangement are all characteristic of her work. Maggie James likely wove this basket between 1910 and 1920."



A GROUP OF SIX WASHOE MINIATURE BASKETS

Tootsie Dick Sam (4), Big Mary of Genoa, and Lame Minnie, all of *degikup* form, including a single-rod example and five three-rod baskets, variously designed in zigzag bands, serrated motifs, triangular and diamond lozenges.
diameter 4 - 2 1/4in

\$6,000 - 9,000

Illustrated

Kania, John and Blaugrund, Alan, *Antique Native American Basketry of Western North America*, 2014, Marquand Books, Seattle, p. 164

Each of the baskets with a Cohn Emporium sticker giving the specific tribe, inventory number, and name of the weaver. In a document detailing the history of this small collection, Marvin Cohodas, Professor in the Department of Fine Arts, at the University of British Columbia writes: "The six Washoe *degikup* baskets pictured below come from the Amy Cohn miniature collection. Amy Cohn, when married to Abe Cohn, became the most important patron of Washoe weavers, especially the famous Louisa Keyser (Dat so la lee). The collection of miniatures that she began before her death in 1919 was continued by Abe Cohn and by his second wife, Margaret Cohn. Margaret Cohn catalogued this collection, assigning a number to each that was preceded by her initials, and attaching a sticker with this information to each basket. In some examples, the sticker also contains the original Emporium Company acquisition number. Margaret Cohn sold the collection in the 1940s, nearly a decade after Abe Cohn's death."





118



119



120



118

A PAIUTE BEADED BASKETRY CRADLE

Of characteristic form, the hood bearing a diamond pattern and a narrow beaded band, the backboard with more diamonds worked in red, blue and yellow cloth strips, colorful ribbons attached.
length 29 1/2in

\$600 - 900

119

TWO CALIFORNIA BASKETS

Including a deep bowl from the Northwestern part of the state, worked in striped and serrated decoration; and a small Maidu burden basket, ticked banding rings the sides.
diameter 11 1/4 and 9 1/2in

\$1,500 - 2,000

120

TWO CENTRAL CALIFORNIA BASKETS

Including a Western Mono miniature bottleneck, showing hourglass figures and zigzag bands; along with a small Maidu bowl, a row of linked diamond lozenges about the midsection.
diameter 4 and 4 1/8in

\$1,500 - 2,000



121



122

121

FIVE MAIDU BASKETS

Comprising four miniatures and a small pedestal basket, the miniature group including a negative three-petal rosette tray, a diamond lattice bowl, and two smaller examples, one showing triangular configurations worked in an extremely fine weave. *diameter 5 - 2in*

\$2,000 - 3,000

Illustrated

Kania, John and Blaugrund, Alan, *Antique Native American Basketry of Western North America*, 2014, Marquand Books, Seattle, p. 186 for two of the five

122

FOUR CALIFORNIA UTILITARIAN BASKETRY ITEMS

Including Western Mono and Paiute sifting or roasting trays, the former with a band of diamond adornment; a rare Pomo clam basket of spiraling openwork design, the rim reinforced with several splints; and a Paiute water bottle, a leather strap fastened to the shoulder. *length 22 1/2 - 11in*

\$1,200 - 1,800

123

A WESTERN MONO BASKET

Alternating diagonal stairstep banding with panels of diamond lozenges.
height 8in, diameter 15 1/2in

\$2,000 - 3,000

124

A WESTERN MONO POLYCHROME BASKET

Of the sort sometimes referred to as a “cooking basket”, the deep bowl adorned with serrated vertical zigzag bands and floating “butterfly” motifs.
height 10 1/4in, diameter 18 1/4in

\$3,000 - 5,000

Illustrated

Kania, John and Blaugrund, Alan, *Antique Native American Basketry of Western North America*, 2014, Marquand Books, Seattle, p. 147

125

A WESTERN MONO POLYCHROME BASKET

Alternating rows of conjoined and concentric diamonds with serrated diagonal bands running base to rim.
height 7 1/4in, diameter 14in

\$2,000 - 3,000

Illustrated

Kania, John and Blaugrund, Alan, *Antique Native American Basketry of Western North America*, 2014, Marquand Books, Seattle, p. 161

126

A MAIDU BASKET

Mary Azbill, the deep bowl decorated with diamond-outlined zigzag banding, triangles made of diamond lozenges pendant from the rim.
height 6 3/4in, diameter 14 3/4in

\$3,000 - 4,000

Illustrated

Kania, John and Blaugrund, Alan, *Antique Native American Basketry of Western North America*, 2014, Marquand Books, Seattle, p. 186 and p. 43 (detail)

In a letter to the collector, Craig Bates, the former Curator of Ethnography at the Yosemite Museum, wrote extensively on Mary Azbill, this basket, and her family. Bates had been a close personal friend of Henry Azbill, Mary's son, and remembered seeing this basket on display in his home. The basket had been made specifically for Henry by his mother in 1932 and was, according to Bates "...the last, or one of the last, baskets woven by Mary Azbill... Henry called the pattern on (the) basket 'rattlesnake'. The division of the pattern into an odd number (seven) is typical of Mary's work. Indeed (the) basket is a fine example of the finest weaving by Mary Azbill."



123



124



125



126



123



124



125



126

127

AN UNUSUAL MAIDU POLYCHROME BASKET

Probably the work of Selena Jackson, of globular form, the sides profusely decorated with serrated triangles complementing a central zigzag band.

height 3 3/4in, diameter 6in

\$7,000 - 10,000

Illustrated

Kania, John and Blaugrund, Alan, *Antique Native American Basketry of Western North America*, 2014, Marquand Books, Seattle, p. 186

The attribution to Selena Jackson, perhaps the best known of the Maidu weavers, was made by Santa Fe basket dealer and author, John Kania. It is an unusual example for the bold use of color and variety of sewing materials, in contrast to the more typical duo-tone baskets from Maidu country.



127

128

A RARE MAIDU FEATHERED BASKET

Of compressed globular form, a single row of black stitching near the base all but covered by a thick thatch of quail topknots sewn to just below the rim.

height 3in, diameter 6 1/2in

\$2,000 - 3,000

Illustrated

Kania, John and Blaugrund, Alan, *Antique Native American Basketry of Western North America*, 2014, Marquand Books, Seattle, pp. 189, 186, and 274-275

129

A RARE MAIDU BASKET

A negative example, the dark surface patterned with a diamond lattice from the rim down to a six-pointed star on the base.

height 2 7/8in, diameter 5 1/4in

\$2,000 - 3,000

Illustrated

Kania, John and Blaugrund, Alan, *Antique Native American Basketry of Western North America*, 2014, Marquand Books, Seattle, p. 186

130

A MAIDU BASKET

The rounded sides adorned with a serrated zigzag band appended by topknot motifs, a trio of triangular devices placed below the rim.

height 5 1/2in, diameter 10 1/4in

\$2,000 - 3,000

Illustrated

Kania, John and Blaugrund, Alan, *Antique Native American Basketry of Western North America*, 2014, Marquand Books, Seattle, p. 186



128

129

130

131

A POMO BASKET

In a "bam-tush" weave, a pinwheel on the base, the remainder decorated in large-scale serrated diagonal bands in a positive-negative effect.

height 8in, diameter 11 3/4in

\$2,000 - 3,000

Illustrated

Kania, John and Blaugrund, Alan, *Antique Native American Basketry of Western North America*, 2014, Marquand Books, Seattle, pp. 175 and 181

132

A PATWIN BASKET

The deep bowl decorated with three columns of stacked sawtooth triangles, asymmetrically placed small filler devices, remains of feather tufts on the upper shoulder, having the rare technical feature of two tapered finished ends.

height 7 1/4in, diameter 14 1/2in

\$3,000 - 4,000

Provenance

Bob Brewer Collection, El Paso, TX

Illustrated

Kania, John and Blaugrund, Alan, *Antique Native American Basketry of Western North America*, 2014, Marquand Books, Seattle, p. 183 and pp. 49, 70 and 71 (details)



131



132



133



134



135

133

A POMO BASKETRY HOPPER

Of characteristic form and function, three design bands and self-stitch panels alternating up to the thick reinforced rim, a *vintage paper tag "E43" on the interior.*
height 8 1/2in, diameter 21 1/2in

\$1,500 - 2,000

Provenance

Gottlieb A. Steiner Collection, Pittsburgh, PA

134

TWO POMO MINIATURE OVAL BASKETS

Each in a distinctive geometric pattern, one with feather tufts augmenting the design, the other making use of clamshell and glass beads, topknots at the rim.
length 5 and 4 3/8in

\$1,500 - 2,000

135

A COLLECTION OF POMO MINIATURES

Including sixteen examples: three "boat" baskets, two bowls, the smaller of which is attributed to *Mary Benson*, and eleven micro-miniatures, two of the tiniest without decorative details but the others with traditional patterns of the region.
diameter 2 - 1/8in

\$1,500 - 2,000

Provenance

Grace Nicholson Collection, Pasadena, CA;
Thyra Maxwell, assistant to Ms. Nicholson

Illustrated

Kania, John and Blaugrund, Alan, *Antique Native American Basketry of Western North America*, 2014, Marquand Books, Seattle, p. 176





136



137



138



139

136

A POMO BEADED TRAY

A single-rod example, the entire underside covered with a concentric star pattern.
height 1 1/4in, diameter 6 1/4in

\$2,000 - 3,000

Illustrated

Kania, John and Blaugrund, Alan, *Antique Native American Basketry of Western North America*, 2014, Marquand Books, Seattle, p. 175

137

A POMO MINIATURE TRAY

Extremely finely woven, the concave basket with the work surface on the underside, displaying stepped topknot devices about a radial center, clamshell beads as complements.
height 1 1/4in, diameter 4 7/8in

\$1,500 - 2,000

Illustrated

Kania, John and Blaugrund, Alan, *Antique Native American Basketry of Western North America*, 2014, Marquand Books, Seattle, p. 175

138

A POMO BEADED BASKET

The flaring flat-bottomed bowl beaded on the underside with a multi-pointed star on the tondo, complemented by duo-tone fretwork banding.
height 2 1/2in, diameter 6 1/4in

\$2,000 - 3,000

Illustrated

Kania, John and Blaugrund, Alan, *Antique Native American Basketry of Western North America*, 2014, Marquand Books, Seattle, p. 175

139

A POMO TRAY

Very finely woven, the negative basket with a five-pointed star on the base, tick marks spaced about the rim.
height 1in, diameter 7in

\$1,500 - 2,000

Illustrated

Kania, John and Blaugrund, Alan, *Antique Native American Basketry of Western North America*, 2014, Marquand Books, Seattle, p. 175



140

A COLLECTION OF CALIFORNIA MINIATURE BASKETS

Including sixteen examples, mostly Pomo work: two “boat” baskets, four baskets of graduated size hung on a single string, a twined bowl, four baskets in seed jar or open bowl form, and three micro-miniatures; along with a Maidu bowl.

2 - 3/16in

\$1,500 - 2,000

Illustrated

Kania, John and Blaugrund, Alan, *Antique Native American Basketry of Western North America*, 2014, Marquand Books, Seattle, p. 176, for the Pomo examples

141

A POMO BASKET

Extremely tightly woven, worked in a negative pattern, the outline of checkered diamonds crisscross the sides, topknots and clamshell beads mark the rim.
height 2 1/4in, diameter 6in

\$2,000 - 3,000

Illustrated

Kania, John and Blaugrund, Alan, *Antique Native American Basketry of Western North America*, 2014, Marquand Books, Seattle, p. 175

142

A POMO GIFT BASKET

Very tightly woven in a spiral effect of serrated diagonal bands about the crenelated tondo motif, glass beads and feather tufts remain on the upper exterior.
height 4 1/4in, diameter 10 1/2in

\$3,000 - 4,000

Illustrated

Kania, John and Blaugrund, Alan, *Antique Native American Basketry of Western North America*, 2014, Marquand Books, Seattle, p. 175

143

A POMO BASKET

Extremely tightly woven, with a trio of stepped diagonal zigzag bands from base to rim, clamshell beads ring the mouth, feather tufts remaining on the upper exterior.
height 3 1/2in, diameter 7 1/2in

\$2,200 - 2,800

Illustrated

Kania, John and Blaugrund, Alan, *Antique Native American Basketry of Western North America*, 2014, Marquand Books, Seattle, p. 175

144

A POMO GIFT BASKET

Showing three repeated diagonal serrated zigzag bands, glass beads and feather tufts on the upper shoulder, clamshell beads and topknots at the mouth.
height 3 1/4in, diameter 8 3/4in

\$2,000 - 3,000

Illustrated

Kania, John and Blaugrund, Alan, *Antique Native American Basketry of Western North America*, 2014, Marquand Books, Seattle, p. 175



145

AN UNSUAL POMO BEADED BASKET

A single-rod bowl, partially beaded with chevrons, diamonds and framing bands.

height 2in, diameter 3 3/4in

\$1,500 - 2,000

Illustrated

Kania, John and Blaugrund, Alan, *Antique Native American Basketry of Western North America*, 2014, Marquand Books, Seattle, p. 175

146

AN UNUSUAL POMO BEADED BASKET

Atypical in that it is woven as a three-rod example unlike most Pomo beaded baskets, a pinwheel pattern woven on the base, these decorated areas unbeaded though the remainder of the exterior is covered in pony beads, showing an alternating design of outlined panels and U-forms.

height 2 3/4in, diameter 7in

\$2,500 - 3,500

Illustrated

Kania, John and Blaugrund, Alan, *Antique Native American Basketry of Western North America*, 2014, Marquand Books, Seattle, pp. 18 and 178

147

A POMO GIFT BASKET

Very tightly woven, stepped pyramid motifs in staggered rows about the sides and base, feather tufts in the reserves and topknots about the rim.

height 2 1/4in, diameter 5in

\$1,500 - 2,000

Illustrated

Kania, John and Blaugrund, Alan, *Antique Native American Basketry of Western North America*, 2014, Marquand Books, Seattle, p. 175

148

A POMO GIFT BASKET

Finely woven in a checkered diamond lattice pattern, topknots and feather tufts in the reserves, more topknots and clamshell beads at the rim.

height 3 1/4in, diameter 7 1/4in

\$3,000 - 4,000





150

149

A POMO BEADED OVAL BASKET

A single-rod example, beaded over its entirety but for the oval start, displaying multi-colored banding and chevron accents, topknots as complements.

height 2 3/4in, length 6 1/4in

\$2,500 - 3,500

Illustrated

Kania, John and Blaugrund, Alan, *Antique Native American Basketry of Western North America*, 2014, Marquand Books, Seattle, p. 175

150

FIVE POMO MINIATURE BEADED BASKETS

Three partially beaded, the smallest two fully beaded, these in reciprocal triangle patterns, the others showing diagonal serrated motifs or fretwork meanders.

diameter 4 1/2 - 1 1/2in

\$1,800 - 2,800

Illustrated

Kania, John and Blaugrund, Alan, *Antique Native American Basketry of Western North America*, 2014, Marquand Books, Seattle, p. 176, for two out of the five



151

151

A COLLECTION OF POMO MINIATURE BASKETS

Including eleven examples, the largest a twined bowl, accompanied by a twined tray and nine coiled baskets of varying size, six of these qualifying as micro-miniatures, all with decorative patterns typical of the region.
diameter 1 3/4 - 1/4in

\$1,500 - 2,000

Illustrated

Kania, John and Blaugrund, Alan, *Antique Native American Basketry of Western North America*, 2014, Marquand Books, Seattle, p. 176

Exhibited

The smallest of the micro-miniature baskets (in the box) was part of a Fred Harvey Collection exhibition at the Albuquerque Art Museum. In a personal communication at that time, a curator from the Heard Museum in Phoenix said it had been made by Joseppa Dicks while she was at the Albuquerque Harvey House doing demonstrations around 1904.

152

A MODOC BEADED BOTTLE

The sizable glass bottle fully covered in netted beadwork, decorated in diagonal bands of diamond lozenges of varying size, stripes about the neck and on the fringed cap.
height 15in, diameter 6in

\$2,000 - 3,000

Provenance

A vintage note attached to the base reads "This Indian bottle was covered by a Modoc squaw in 1894. Bought by the Pepperdine family, Mrs. Gwendolyn Janes"

153

A POMO BEADED BASKET

Lydia Faught, a single-rod example, unusual in that virtually every stitch carries a bead, the overall design of a concentric diamond lattice underlined by a zigzag band, more diamonds and a five-pointed star on the base.
height 3 1/4in, diameter 10 3/4in

\$6,000 - 9,000

Illustrated

Abel-Vidor, Suzanne, *Remember Your Relations*, 2005, Heyday publishers, Berkeley, CA, p. 75 for a photograph from 1951 of Lydia Faught holding this basket: "... Mrs. Faught was an artist skilled in all types of basketmaking, with a special talent for design. Her artistry and business acumen led to a client list including collectors from as far away as Los Angeles and San Diego, enabling her to support herself and her sons."; also Kania, John and Blaugrund, Alan, *Antique Native American Basketry of Western North America*, 2014, Marquand Books, Seattle, p. 175



149

152



153



154



155

154

THREE POMO MINIATURE BASKETS

Including two three-rod examples, very finely woven and worked in distinctive designs of dotted panels or reciprocal triangles, the latter ringed with topknots at the rim; and a single-rod bowl, stepped frets from base to rim.

diameter 2 1/4, 3 and 3 3/4in

\$1,500 - 2,000

Illustrated

Kania, John and Blaugrund, Alan, *Antique Native American Basketry of Western North America*, 2014, Marquand Books, Seattle, p. 176, for the first two

155

TWO POMO MINIATURE BASKETS

Including a very finely woven tray, the convex work surface drawn with four opposing hooked columns, remains of feather tufts and clamshell beads at the rim; and a shallow bowl, clamshell and glass beads placed over the dark diagonal decoration, topknots about the rim and midsection.

diameter 4 1/4 and 5in

\$1,500 - 2,000

Provenance

Gottlieb A. Steiner Collection, Pittsburgh, PA, for the latter

A copy of the Steiner inventory ledger for this basket is included in the lot.

156

A NORTHWEST CALIFORNIA POLYCHROME BASKET

The sizable container decorated in eight-pointed stars, topknot devices and terraced pyramids, an openwork section below the rim. height 9 3/4in, diameter 17in

\$1,500 - 2,000

Provenance

Eva Slater Collection, Los Angeles

Illustrated

Kania, John and Blaugrund, Alan, *Antique Native American Basketry of Western North America*, 2014, Marquand Books, Seattle, p. 214



156

157

A HUPA STORAGE BASKET

Of characteristic beehive form, the sides replete with complementary duo-toned sawtooth zigzag bands. height 21in, diameter 21in

\$3,000 - 5,000

Illustrated

Kania, John and Blaugrund, Alan, *Antique Native American Basketry of Western North America*, 2014, Marquand Books, Seattle, p. 214

While most basketry items from the Northwest California Klamath River zone are indistinguishable as to cultural provenance, these enormous storage containers have almost always been ascribed in literary references to the Hupa.



157



(alternative view)

158

A WIYOT POLYCHROME LIDDED BASKET

Elizabeth Hickox, very finely and tightly woven, with tall knob finial, the tapering body and fitted lid worked in a positive-negative pattern of serrated and sawtooth banding, yellow quills highlighting the decorative effect.

height 4 3/4in, diameter 5 1/4in

\$15,000 - 25,000

Illustrated

Kania, John and Blaugrund, Alan, *Antique Native American Basketry of Western North America*, 2014, Marquand Books, Seattle, pp. 216 and 214



159

A RARE AND UNUSUAL ACHUMAWI BASKET

In olla form, a pair of human figures and eight-pointed stars portrayed on the tapering shoulder and neck, the bulbous body drawn with a pair of surmounted serrated and striped zigzag bands.

height 10 1/2in, diameter 11in

\$3,000 - 5,000

Provenance

William Randolph Hearst Collection, Sold by Park-Bernet, NY, 1963

Illustrated

Kania, John and Blaugrund, Alan, *Antique Native American Basketry of Western North America*, 2014, Marquand Books, Seattle, p. 196





160



161



162



163





164

160

THREE NORTHWEST CALIFORNIA POLYCHROME BASKETRY HATS

Each conceived with three areas of decoration - rim edge, body, and crown, in characteristic patterns of the region.

diameter 7 1/8, 7 and 6 3/4in

\$1,500 - 2,000

Illustrated

Kania, John and Blaugrund, Alan, *Antique Native American Basketry of Western North America*, 2014, Marquand Books, Seattle, p. 215

161

THREE NORTHWEST CALIFORNIA BASKETRY HATS

Two polychrome examples and one duotone, each conceived with three areas of decoration - rim edge, body, and crown, in characteristic patterns of the region, atypical eight-pointed stars used on one.

diameter 7, 7 and 6 3/4in

\$1,500 - 2,000

Illustrated

Kania, John and Blaugrund, Alan, *Antique Native American Basketry of Western North America*, 2014, Marquand Books, Seattle, p. 215

162

THREE NORTHWEST CALIFORNIA BASKETRY HATS

Two polychrome examples, the third duotone, each conceived with three areas of decoration - rim edge, body, and crown, in characteristic patterns of the region.

diameter 6 1/2, 6 1/2 and 6 3/4in

\$1,500 - 2,000

Illustrated

Kania, John and Blaugrund, Alan, *Antique Native American Basketry of Western North America*, 2014, Marquand Books, Seattle, p. 215

163

THREE NORTHWEST CALIFORNIA BASKETRY HATS

One polychrome and two duotone examples, each conceived with three areas of decoration - rim edge, body, and crown, in characteristic patterns of the region.

diameter 6 1/2, 6 1/2 and 6 3/8in

\$1,500 - 2,000

Illustrated

Kania, John and Blaugrund, Alan, *Antique Native American Basketry of Western North America*, 2014, Marquand Books, Seattle, p. 215

164

THREE NORTHWEST CALIFORNIA LIDDED BASKETS

Including two tobacco baskets, a more standard-size example and a miniature, each with domed lid fastened by hide strips; and a larger container, the lid raised up high in "onion dome" fashion.

diameter 6 3/4, 5 1/2 and 2in

\$1,500 - 2,000

Illustrated

Kania, John and Blaugrund, Alan, *Antique Native American Basketry of Western North America*, 2014, Marquand Books, Seattle, p. 214 for the two largest examples

165

AN ACHUMAWI BASKET

Worked in stepped diamond zigzag bands and serrated complements.

height 10 1/4in, diameter 16 1/2in

\$2,000 - 3,000

Illustrated

Kania, John and Blaugrund, Alan, *Antique Native American Basketry of Western North America*, 2014, Marquand Books, Seattle, p. 196

166

FOUR NORTHWEST CALIFORNIA BASKETRY HATS

Three polychrome and one duotone, each conceived with three areas of decoration - rim edge, body, and crown, in characteristic patterns of the region.

diameter 7 - 6 1/2in

\$1,500 - 2,000

Illustrated

Kania, John and Blaugrund, Alan, *Antique Native American Basketry of Western North America*, 2014, Marquand Books, Seattle, p. 215

167

THREE NORTHWEST CALIFORNIA POLYCHROME BASKETRY HATS

Each conceived with three areas of decoration - rim edge, body, and crown, in characteristic patterns of the region.

diameter 7 1/4, 6 1/4 and 6 1/4in

\$1,500 - 2,000

Illustrated

Kania, John and Blaugrund, Alan, *Antique Native American Basketry of Western North America*, 2014, Marquand Books, Seattle, p. 215

168

FOUR NORTHWEST CALIFORNIA POLYCHROME BASKETRY HATS

Each conceived with three areas of decoration - rim edge, body, and crown, in characteristic patterns of the region.

diameter 7 - 6 3/8in

\$1,500 - 2,000

Illustrated

Kania, John and Blaugrund, Alan, *Antique Native American Basketry of Western North America*, 2014, Marquand Books, Seattle, p. 215



165



167

166

168

169

AN ATSUGEWI BASKET

With atypical wide flaring mouth, decorated in a grid of linear banding and cross motifs.
height 8 1/2in, diameter 16 1/4in

\$2,500 - 3,500

Illustrated

Kania, John and Blaugrund, Alan, *Antique Native American Basketry of Western North America*, 2014, Marquand Books, Seattle, pp. 196 and 84 (detail)

170

A RARE YANA BASKET

The base with a strongly concave start, worked in the half twist overlay technique to show a densely drawn pattern of complementary crenelated bands.
height 5 1/2in, diameter 7in

\$1,500 - 2,000

Provenance

Grace Nicholson, Pasadena, CA

Illustrated

Kania, John and Blaugrund, Alan, *Antique Native American Basketry of Western North America*, 2014, Marquand Books, Seattle, p. 199

In a letter to the collector, Santa Fe basket dealer John Kania wrote: "The official count of Yana baskets in museums include some 38 examples making them some of the rarest baskets to be encountered. This piece is one of the few attractive examples as most are rather plain. The early dealer Grace Nicholson collected this basket and still remaining is a small metal-rimmed tag in her handwriting (attached to the basket's rim) which reads: 'Yana, Rare'. And on its reverse reads: 'No. 134' and then in parentheses '(3187)' which is the numbered entry for the basket in Nicholson's ledger. The last notation on this side of the tag is '9' which in the ledger corresponds to the price which was \$9.00...it was Grace Nicholson's fortuitous collecting that preserved the vast majority of known Yana baskets many of which are now housed at the Peabody Museum. This is one of the few examples that remained unaccounted for from her ledger." A copy of p. 330 from Nicholson's ledger including the basket accompanies this lot.





173

171

A NORTHWEST CALIFORNIA BASKET

A negative example, the dark background in contrast to the serrated diagonal diamond bands adorning the sides.
height 7 1/4in, diameter 10 1/2in

\$1,800 - 2,800

172

AN UNUSUAL KAROK BASKET

Nettie Ruben, a broad serrated zigzag band undulates about the sides, red cellophane used as a sewing material adding color to the design.
height 4 3/4in, diameter 7 1/2in

\$1,500 - 2,500

Illustrated

Kania, John and Blaugrund, Alan, *Antique Native American Basketry of Western North America*, 2014, Marquand Books, Seattle, p. 214

A promotional note inside the basket claims "Gift Basket by Nettie Ruben, Karuk, (C. 1875-1957) Mrs. Ruben was noted not only as one of the best basket-makers but also for her willingness to experiment, which added to her reputation as an innovative weaver. The use of non-natural materials was rare. In this case, cellophane strips from cigarette packages have been substituted for porcupine quills."

173

THREE NORTHWEST CALIFORNIA LIDDED BASKETS

All three finely woven and with knob finials, decorated in characteristic patterns of the region, one with a handle fastened below the rim.
diameter 5 1/8, 4 7/8 and 4in

\$2,500 - 3,500

Illustrated

Kania, John and Blaugrund, Alan, *Antique Native American Basketry of Western North America*, 2014, Marquand Books, Seattle, p. 214



174



175



176



177

174

A NORTHWEST CALIFORNIA LIDDED BASKET

A series of repeated sawtooth zigzag bands rise up the sides and across the domed lid.

height 11in, diameter 12in

\$2,000 - 3,000

Provenance

James Schwabacher Collection, San Francisco

Illustrated

Kania, John and Blaugrund, Alan, *Antique Native American Basketry of Western North America*, 2014, Marquand Books, Seattle, pp. 216 and 214

175

A NORTHWEST CALIFORNIA LIDDED BASKET

The bulbous sides and lid similarly decorated in a repetition of diagonal stepped and serrated bands.

height 7 3/4, diameter 9 3/4in

\$1,500 - 2,000

Illustrated

Kania, John and Blaugrund, Alan, *Antique Native American Basketry of Western North America*, 2014, Marquand Books, Seattle, p. 214

176

A NORTHWEST CALIFORNIA POLYCHROME LIDDED BASKET

The tapering sides and domed lid similarly decorated with a repetition of striped and serrated chevron motifs.

height 8 1/2in, diameter 8 3/4in

\$1,800 - 2,800

Illustrated

Kania, John and Blaugrund, Alan, *Antique Native American Basketry of Western North America*, 2014, Marquand Books, Seattle, p. 214

177

SIX NORTHWEST CALIFORNIA MINIATURE BASKETS

Including a lidded example, all in characteristic designs of the region, one with a stepped meander enhanced by dyed quillwork.

diameter 4 - 1 1/4in

\$1,500 - 2,000



178



179



180



181

178

THREE NORTHERN CALIFORNIA BASKETS

Including an Achumawi lidded example, woven with diagonal stepped decoration; an Achumawi/Atsugewi miniature burden basket; and a tiny Achumawi pictorial bowl arrayed in butterfly images.
diameter 5 1/2, 6 1/2 and 2 1/2in

\$1,500 - 2,000

Illustrated

Kania, John and Blaugrund, Alan, *Antique Native American Basketry of Western North America*, 2014, Marquand Books, Seattle, p. 196 for first

179

FOUR NORTHEAST CALIFORNIA ITEMS

Including two Klamath baskets, one a hat with quilled details and bead and shell decoration, the other showing negative diamond lozenges on the dark background; an Astarawi (a branch of the Achumawi) basketry hat, the zigzag banded decoration enhanced by dyed quillwork; and a Klamath beaded purse.
diameter of the baskets 7 1/2, 7 and 8 3/4in, length of latter 8 1/4in

\$1,800 - 2,800

Illustrated

Kania, John and Blaugrund, Alan, *Antique Native American Basketry of Western North America*, 2014, Marquand Books, Seattle, p. 197 for the hat, p. 207 for the negative example

180

SEVEN NORTHWEST BASKETS

Including an unusual Wasco polychrome bowl with beaded band at the rim; a fully-beaded Wasco miniature; a Chehalis hat, festooned in bead and shell adornments, *added later*; a Quinault example in diamond decoration; two more miniatures attributed to the Lower Chehalis and Lower Quinault; and a large Makah bowl.
diameter 3 - 9 1/2in

\$1,500 - 2,000

181

A KLAMATH POLYCHROME GAMBLING TRAY

Woven with two concentric circles lined by triangles appended by topknot motifs, more of these from the rim oriented towards the center, yellow dyed quillwork used to enhance the aesthetic.
diameter 19 1/2in

\$2,000 - 3,000

Provenance

A cloth tag sewn on the reverse reads "Wilson 58.60.19(2)". Mr. Wilson served as superintendent of a number of Indian agencies from 1895 until 1925, including the Klamath Agency from 1905 until 1910; Jacksonville Museum; Favell Museum, Klamath Falls, OR

Illustrated

Kania, John and Blaugrund, Alan, *Antique Native American Basketry of Western North America*, 2014, Marquand Books, Seattle, p. 207

182

A SKOKOMISH POLYCHROME BASKET

Designed with four registers of dog motifs and conjoined concentric box pairs.
height 10in, diameter 11 1/4in

\$2,000 - 3,000

Illustrated

Kania, John and Blaugrund, Alan, *Antique Native American Basketry of Western North America*, 2014, Marquand Books, Seattle, p. 241

183

A WASCO SALLY BAG

The soft-sided container displaying a row of "X-ray" human figures and small diamond complements.
height 5 1/2in, diameter 5in

\$1,500 - 2,500

Provenance

Bert Robinson Collection, Arizona

Illustrated

Kania, John and Blaugrund, Alan, *Antique Native American Basketry of Western North America*, 2014, Marquand Books, Seattle, p. 251



152



153



153



153

184

FIVE NORTHWEST BASKETRY ITEMS

Including two Klickitat examples, the smaller displaying a row of human figures, *Elsie Thomas*; a Nez Perce polychrome hat, an ermine tail attached at the crown; and two Tsimshian baskets, one with lid.
height 6 1/2 - 2 1/2in

\$1,500 - 2,000

Illustrated

Kania, John and Blaugrund, Alan, *Antique Native American Basketry of Western North America*, 2014, Marquand Books, Seattle, p. 233 for the Klickitat example

185

A COLLECTION OF NORTHWEST BASKETRY MINIATURES

Including two lidded examples from the Attu; two Tlingit bowls, one of them in oval form; a Tlingit model tea cup and saucer; and a Klickitat imbricated basket, *Elsie Thomas*.
height 1 1/2-2in

\$1,500 - 2,000

Illustrated

Kania, John and Blaugrund, Alan, *Antique Native American Basketry of Western North America*, 2014, Marquand Books, Seattle, p. 273 for the Attu miniatures



186



187

186

SEVEN NOOTKA/MAKAH LIDDED BASKETS

Showing a variety of designs characteristic of the region, including depictions of birds, whales, and whaling expeditions, all vintage examples with the exception of the smallest, *made by Frances Williams (died 1996)*.
diameter 4 1/4 - 2in

\$2,000 - 3,000

Provenance

James Schwabacher Collection, San Francisco, for the one showing spreadwinged eagles and arrows

Illustrated

Kania, John and Blaugrund, Alan, *Antique Native American Basketry of Western North America*, 2014, Marquand Books, Seattle, p. 247 and 248 for the eagle and arrow example

187

THREE NOOTKA/MAKAH BASKET COVERED BOTTLES

Including one rare three-sided example, the weaver taking advantage of the form to create a facial design that can be viewed from any angle; a second displaying a variety of seabirds as well as a rooster and chickens; the third worked strictly in geometric patterns.
height 8, 9 1/4 and 10 1/4in

\$1,800 - 2,400

Illustrated

Kania, John and Blaugrund, Alan, *Antique Native American Basketry of Western North America*, 2014, Marquand Books, Seattle, p. 247

188

A HAIDA BASKETRY HAT

Of characteristic form, the self-stitch decorated brim and top painted to depict a stylized mythological sea mammal, perhaps a sea-wolf, a four-arm radial motif on the crown.
height 7 1/4in, diameter 14in

\$6,000 - 9,000

Illustrated

Kania, John and Blaugrund, Alan, *Antique Native American Basketry of Western North America*, 2014, Marquand Books, Seattle, p. 262



(alternative view)



189

A TLINGIT POLYCHROME BASKET

False-embroidered over most of the basket's surface and featuring a series of tapered ovals and elongated box devices, giving the overall effect of repeated facial images.
height 11 1/4in, diameter 13in

\$7,000 - 10,000

Illustrated

Kania, John and Blaugrund, Alan, *Antique Native American Basketry of Western North America*, 2014, Marquand Books, Seattle, p. 257

A vintage label on the interior base reads: "No. 64, Spruce root eagle eye design".

190

A TLINGIT POLYCHROME PICTORIAL BASKET

Bearing three identical depictions of a killer whale, worked in traditional stylized fashion, a humanoid face below the belly, concentric box motifs as complements below the rim.
height 7in, diameter 10in

\$4,000 - 6,000

Illustrated

Kania, John and Blaugrund, Alan, *Antique Native American Basketry of Western North America*, 2014, Marquand Books, Seattle, p. 257



189

191

A TLINGIT POLYCHROME BASKET

A deep bowl, decorated with twin series of chevron-enclosed diamond lozenges, flanking a central negative zigzag band. height 9in, diameter 10in

\$2,500 - 3,500

Provenance

Gottlieb A. Steiner Collection, Pittsburgh, PA

Illustrated

Kania, John and Blaugrund, Alan, *Antique Native American Basketry of Western North America*, 2014, Marquand Books, Seattle, p. 257

A photocopy of the Steiner inventory ledger for this basket accompanies the lot.

192

A TLINGIT POLYCHROME BASKET

A deep bowl, worked in three decorative bands of stepped devices and a fretwork meander, self-stitch diamonds fill the reserves. height 9 3/4in, diameter 10in

\$3,000 - 4,000

Illustrated

Kania, John and Blaugrund, Alan, *Antique Native American Basketry of Western North America*, 2014, Marquand Books, Seattle, p. 257



190

191

192

193

A TLINGIT BASKETRY CASE

Comprising two fitted cylinders, the smaller profusely decorated in a grid of conforming triangle devices, the wider outer shell worked in a faint lattice pattern.
length 5 and 5 1/4in, diameter 2 1/2in

\$2,000 - 3,000

Illustrated

Kania, John and Blaugrund, Alan, *Antique Native American Basketry of Western North America*, 2014, Marquand Books, Seattle, pp. 259 and 257

This type of two-piece cylinder container is sometimes referred to as a "down-holder", suggesting use as an implement for ceremonial or curative occasions.

194

A TLINGIT POLYCHROME PICTORIAL BASKET

A pair of jagged-teeth wolf heads splayed across the sides, red details on the mouth and muzzle.
height 5in, diameter 5 1/2in

\$2,000 - 3,000

Illustrated

Kania, John and Blaugrund, Alan, *Antique Native American Basketry of Western North America*, 2014, Marquand Books, Seattle, p. 257

195

A HAIDA MINIATURE PAINTED BASKETRY HAT

Of characteristic form, the details of a stylized avian figure splayed about the sides and crown, trimmed with glass beads.
height 3 1/4in, diameter 6 1/2in

\$2,000 - 3,000

196

A TLINGIT POLYCHROME LIDDED BASKET

Decorated with three bands of interlinked stylized floriforms, a spiral effect on the rattle top finial.
height 3 1/2in, diameter 5 1/2in

\$2,000 - 3,000

Illustrated

Kania, John and Blaugrund, Alan, *Antique Native American Basketry of Western North America*, 2014, Marquand Books, Seattle, p. 257

193



194



195

197

A TLINGIT POLYCHROME PICTORIAL BASKET

A pair of eagle head portraits adorn the sides, the rattle top lid in a pinwheel pattern.
height 2 3/4in, diameter 3 3/4in

\$1,500 - 2,000

Illustrated

Kania, John and Blaugrund, Alan, *Antique Native American Basketry of Western North America*, 2014, Marquand Books, Seattle, p. 257

198

A TLINGIT POLYCHROME LIDDED BASKET

A rattle-top example, with a spiral effect on the raised finial, a chain of diamond and box motifs the primary design.
height 4 1/4in, diameter 7in

\$2,500 - 3,500

Illustrated

Kania, John and Blaugrund, Alan, *Antique Native American Basketry of Western North America*, 2014, Marquand Books, Seattle, p. 257



(alternative view)





199



200



201

199

TWO TLINGIT POLYCHROME BASKETS

Including an open bowl, a pair of fretwork bands and diagonal stepped panels on the sides; and a rattle-top example, both lid and body covered in colorful designs of chevrons, striping and zigzags. diameter 6 3/4 and 4 1/2in

\$1,500 - 2,000

Provenance

James Schwabacher Collection, San Francisco, for the first

Illustrated

Kania, John and Blaugrund, Alan, *Antique Native American Basketry of Western North America*, 2014, Marquand Books, Seattle, p. 257

200

TWO ATTU BASKETS

Including a larger lidded example, wool-embroidered diamonds in staggered rows about the body and top; and an open container, showing zigzag decorations, an openwork scalloped rim and handle. height 6 1/2 and 4in

\$1,200 - 1,800

Provenance

Gottlieb A. Steiner collection, Pittsburgh, PA, for the first

Illustrated

Kania, John and Blaugrund, Alan, *Antique Native American Basketry of Western North America*, 2014, Marquand Books, Seattle, p. 273

A copy of the Steiner collection inventory ledger for this basket accompanies the lot.



202



203

201

TWO ATTU BASKETRY ITEMS

Each remarkably tightly woven, including a lidded basket with raised finial, embroidered to show flowers and chainlink bands; along with a basketry-covered glass bottle, similarly decorated in floral motifs and banding. height 4 1/8 and 3 7/8in

\$1,500 - 2,000

202

TWO ATTU BASKETRY ITEMS

Both remarkably finely woven, including a circular plaque, a variety of stitching styles and floral embroidery as decoration, *in a plexiglass display stand*; and a two-piece fitted wallet, each half with a distinct multi-colored design. diameter of first 6in, length of latter's sections 4 3/4 and 3 7/8in

\$1,500 - 2,000

Illustrated

Kania, John and Blaugrund, Alan, *Antique Native American Basketry of Western North America*, 2014, Marquand Books, Seattle, p. 273 for wallet

203

TWO ATTU BASKETS

Both remarkably finely woven, one showing staggered rows of embroidered stylized floriforms alternating with openwork sections; the other with a scalloped flaring rim, floral and chainlink banded decoration. diameter 5 and 6 1/2in

\$1,500 - 2,000

Illustrated

Kania, John and Blaugrund, Alan, *Antique Native American Basketry of Western North America*, 2014, Marquand Books, Seattle, p. 273

204

AN ATTU POLYCHROME LIDDED BASKET

With knob finial, embroidered in zigzag banding and large-scale floral motifs.

height 4in, diameter 3 1/4in

\$1,200 - 1,800

Illustrated

Kania, John and Blaugrund, Alan, *Antique Native American Basketry of Western North America*, 2014, Marquand Books, Seattle, p. 273

205

AN ATTU POLYCHROME LIDDED BASKET

With knob finial, embroidered in rows of diamonds punctuated by blossom motifs.

height 4in, diameter 4in

\$1,500 - 2,000

Illustrated

Kania, John and Blaugrund, Alan, *Antique Native American Basketry of Western North America*, 2014, Marquand Books, Seattle, p. 273

206

AN ATTU POLYCHROME LIDDED BASKET

With knob finial, embroidered in chain link bands punctuated by blossom motifs.

height 3 3/4in, diameter 4 1/4in

\$1,500 - 2,000

Illustrated

Kania, John and Blaugrund, Alan, *Antique Native American Basketry of Western North America*, 2014, Marquand Books, Seattle, p. 273

207

AN ATTU POLYCHROME LIDDED BASKET

The lid with knob finial, embroidered in circular bands and floating blossom motifs.

height 5in, diameter 4 3/4in

\$2,000 - 3,000

Illustrated

Kania, John and Blaugrund, Alan, *Antique Native American Basketry of Western North America*, 2014, Marquand Books, Seattle, p. 273

208

AN ATTU POLYCHROME LIDDED BASKET

With knob finial, embroidered with banding about hourglass and asterisk devices.

height 4 1/4in, diameter 4 1/4in

\$1,500 - 2,000

Illustrated

Kania, John and Blaugrund, Alan, *Antique Native American Basketry of Western North America*, 2014, Marquand Books, Seattle, p. 273



205

207



204



206



208



209



210



209^y

TWO ESKIMO BALEEN LIDDED BASKETS

The largest tightly coiled, topped with an ivory walrus head finial, *unsigned*; the smaller in a gap-stitch weave, and showing a bear head on the lid, *Marvin S. Peter, 1949, #303. diameter 4 1/2 and 2 3/4in*

\$1,500 - 2,000

Illustrated

Kania, John and Blaugrund, Alan, *Antique Native American Basketry of Western North America*, 2014, Marquand Books, Seattle, p. 270 for largest

210

FOUR EASTERN CONTAINERS

All constructed out of birchbark and adorned with bird quills or moosehair, including two larger Micmac examples, fully covered in geometric patterns; and two Algonquin novelties, a fitted rectangular case covered in red velvet and a lidded box. *length 8 - 3 1/4in*

\$1,500 - 2,000

CONDITIONS OF SALE

The following Conditions of Sale, as amended by any published or posted notices or verbal announcements during the sale, constitute the entire terms and conditions on which property listed in the catalog shall be offered for sale or sold by Bonhams & Butterfields Auctioneers Corp. and any consignor of such property for whom we act as agent. If live online bidding is available for the subject auction, additional terms and conditions of sale relating to online bidding will apply; see www.bonhams.com/WebTerms for the supplemental terms. As used herein, "Bonhams," "we" and "us" refer to Bonhams & Butterfields Auctioneers Corp.

1. As used herein, the term "bid price" means the price at which a lot is successfully knocked down to the purchaser. The term "purchase price" means the aggregate of (a) the bid price, (b) a PREMIUM retained by us and payable by the purchaser EQUAL TO 25% OF THE FIRST \$250,000 OF THE BID PRICE, 20% OF THE AMOUNT OF THE BID PRICE ABOVE \$250,000 UP TO AND INCLUDING \$4,000,000, AND 12.5% OF THE AMOUNT OF THE BID PRICE OVER \$4,000,000, and (c) unless the purchaser is exempt by law from the payment thereof, any Alabama, Arizona, California, Colorado, Connecticut, Florida, Georgia, Hawaii, Illinois, Indiana, Kentucky, Maine, Massachusetts, Michigan, Minnesota, Nevada, New Jersey, New York, North Carolina, Ohio, Pennsylvania, Rhode Island, Texas, Virginia, Washington, D.C., Washington state, Wisconsin, Wyoming or other state or local sales tax (or compensating use tax) and other applicable taxes. With regard to New York sales tax, please refer to the "Sales and Use Tax" section of these Conditions of Sale.

2. On the fall of the auctioneer's hammer, the highest bidder shall have purchased the offered lot in accordance and subject to compliance with all of the conditions set forth herein and (a) assumes full risk and responsibility therefor, (b) if requested will sign a confirmation of purchase, and (c) will pay the purchase price in full or such part as we may require for all lots purchased. No lot may be transferred. Any person placing a bid as agent on behalf of another (whether or not such person has disclosed that fact or the identity of the principal) may be jointly and severally liable with the principal under any contract resulting from the acceptance of a bid.

Unless otherwise agreed, payment in good funds is due and payable within five (5) business days following the auction sale. Whenever the purchaser pays only a part of the total purchase price for one or more lots purchased, we may apply such payments, in our sole discretion, to the lot or lots we choose. Payment will not be deemed made in full until we have collected good funds for all amounts due.

Payment for purchases may be made in or by (a) cash, (b) cashier's check or money order, (c) personal check with approved credit drawn on a U.S. bank, (d) wire transfer or other immediate bank transfer, or (e) Visa, MasterCard, American Express or Discover credit, charge or debit card. A processing fee will be assessed on any returned checks. Please note that the amount of cash notes and cash equivalents that can be accepted from a given purchaser may be limited.

To the fullest extent permitted by applicable law: The purchaser grants us a security interest in the property, and we may retain as collateral security for the purchaser's obligations to us, any property and all monies held or received by us for the account of the purchaser, in our possession. We also retain all rights of a secured party under the California Commercial Code. If the foregoing conditions or any other applicable conditions herein are not complied with, in addition to all other remedies available to us and the consignor by law, we may at our election: (a) hold the purchaser liable for the full purchase price and any late charges, collection costs, attorneys' fees and costs, expenses and incidental damages incurred by us or the

consignor arising out of the purchaser's breach; (b) cancel the sale, retaining as liquidated damages all payments made by the purchaser; and/or (c) cancel the sale and/or resell the purchased property, at public auction and/or by private sale, and in such event the purchaser shall be liable for the payment of all consequential damages, including any deficiencies or monetary losses, and all costs and expenses of such sale or sales, our commissions at our standard rates, all other charges due hereunder, all late charges, collection costs, attorneys' fees and costs, expenses and incidental damages. In addition, where two or more amounts are owed in respect of different transactions by the purchaser to us, to Bonhams 1793 Limited and/or to any of our other affiliates, subsidiaries or parent companies worldwide within the Bonhams Group, we reserve the right to apply any monies paid in respect of a transaction to discharge any amount owed by the purchaser. If all fees, commissions, premiums, bid prices and other sums due to us from the purchaser are not paid promptly as provided in these Conditions of Sale, we reserve the right to impose a finance charge equal to 1.5% per month (or, if lower, the maximum nonusurious rate of interest permitted by applicable law), on all amounts due to us beginning on the 31st day following the sale until payment is received, in addition to other remedies available to us by law.

3. We reserve the right to withdraw any property and to divide and combine lots at any time before such property's auction. Unless otherwise announced by the auctioneer at the time of sale, all bids are per lot as numbered in the catalog and no lots shall be divided or combined for sale.

4. We reserve the right to reject a bid from any bidder, to split any bidding increment, and to advance the bidding in any manner the auctioneer may decide. In the event of any dispute between bidders, or in the event the auctioneer doubts the validity of any bid, the auctioneer shall have sole and final discretion either to determine the successful bidder or to re-offer and resell the article in dispute. If any dispute arises after the sale, our sales records shall be conclusive in all respects.

5. If we are prevented by fire, theft or any other reason whatsoever from delivering any property to the purchaser or a sale otherwise cannot be completed, our liability shall be limited to the sum actually paid therefor by the purchaser and shall in no event include any compensatory, incidental or consequential damages.

6. If a lot is offered subject to a reserve, we may implement such reserve by bidding on behalf of the consignor, whether by opening bidding or continuing bidding in response to other bidders until reaching the reserve. If we have an interest in an offered lot and the proceeds therefrom other than our commissions, we may bid therefor to protect such interest. **CONSIGNORS ARE NOT ALLOWED TO BID ON THEIR OWN ITEMS.**

7. All statements contained in the catalog or in any bill of sale, condition report, invoice or elsewhere as to authorship, period, culture, source, origin, measurement, quality, rarity, provenance, importance, exhibition and literature of historical relevance, or physical condition **ARE QUALIFIED STATEMENTS OF OPINION AND NOT REPRESENTATIONS OR WARRANTIES.** No employee or agent of Bonhams is authorized to make on our behalf or on that of the consignor any representation or warranty, oral or written, with respect to any property.

8. All purchased property shall be removed from the premises at which the sale is conducted by the date(s) and time(s) set forth in the "Buyer's Guide" portion of this catalog. Property designated with a "W" and associated purchased lots, if not removed promptly following sale, will be transferred to an offsite warehouse at the purchaser's risk and expense, as set forth in more detail in the "Buyer's Guide." Purchased property that is permitted to remain

onsite at Bonhams' facility should be removed at the purchaser's expense not later than 5:00 p.m. Pacific Time five (5) business days following the date of the sale. If not so removed, a storage fee of \$5.00 per lot per day will be payable to us by the purchaser beginning at the close of the 21st day following the sale, and we may thereafter transfer such property to an offsite warehouse at the purchaser's risk and expense. Accounts must be settled in full before property will be released. Packing and handling of purchased lots are the responsibility of the purchaser. Bonhams can provide packing and shipping services for certain items as noted in the "Buyer's Guide" section of the catalog.

9. The copyright in the text of the catalog and the photographs, digital images and illustrations of lots in the catalog belong to Bonhams or its licensors. You will not reproduce or permit anyone else to reproduce such text, photographs, digital images or illustrations without our prior written consent.

10. These Conditions of Sale shall bind the successors and assigns of all bidders and purchasers and inure to the benefit of our successors and assigns. No waiver, amendment or modification of the terms hereof (other than posted notices or oral announcements during the sale) shall bind us unless specifically stated in writing and signed by us. If any part of these Conditions of Sale is for any reason invalid or unenforceable, the rest shall remain valid and enforceable.

11. These Conditions of Sale and the purchaser's and our respective rights and obligations hereunder are governed by the laws of the State of California. By bidding at an auction, each purchaser and bidder agrees to be bound by these Conditions of Sale. Any dispute, controversy or claim arising out of or relating to this agreement, or the breach, termination or validity thereof, brought by or against Bonhams (but not including claims brought against the consignor by the purchaser of lots consigned hereunder) shall be resolved by the procedures set forth below.

MEDIATION AND ARBITRATION PROCEDURES

(a) Within 30 days of written notice that there is a dispute, the parties or their authorized and empowered representatives shall meet by telephone and/or in person to mediate their differences. If the parties agree, a mutually acceptable mediator shall be selected and the parties will equally share such mediator's fees. The mediator shall be a retired judge or an attorney familiar with commercial law and trained in or qualified by experience in handling mediations. Any communications made during the mediation process shall not be admissible in any subsequent arbitration, mediation or judicial proceeding. All proceedings and any resolutions thereof shall be confidential, and the terms governing arbitration set forth in paragraph (c) below shall govern.

(b) If mediation does not resolve all disputes between the parties, or in any event no longer than 60 days after receipt of the written notice of dispute referred to above, the parties shall submit the dispute for binding arbitration before a single neutral arbitrator. Such arbitrator shall be a retired judge or an attorney familiar with commercial law and trained in or qualified by experience in handling arbitrations. Such arbitrator shall make all appropriate disclosures required by law. The arbitrator shall be drawn from a panel of a national arbitration service agreed to by the parties, and shall be selected as follows: (i) If the national arbitration service has specific rules or procedures, those rules or procedures shall be followed; (ii) If the national arbitration service does not have rules or procedures for the selection of an arbitrator, the arbitrator shall be an individual jointly agreed to by the parties. If the parties cannot agree on a national arbitration service, the arbitration shall be conducted by the American Arbitration Association, and the arbitrator shall be selected in accordance with the Rules of

CONDITIONS OF SALE - CONTINUED

the American Arbitration Association. The arbitrator's award shall be in writing and shall set forth findings of fact and legal conclusions.

(c) Unless otherwise agreed to by the parties or provided by the published rules of the national arbitration service:

(i) the arbitration shall occur within 60 days following the selection of the arbitrator;

(ii) the arbitration shall be conducted in the designated location, as follows: (A) in any case in which the subject auction by Bonhams took place or was scheduled to take place in the State of New York or Connecticut or the Commonwealth of Massachusetts, the arbitration shall take place in New York City, New York; (B) in all other cases, the arbitration shall take place in the city of San Francisco, California; and

(iii) discovery and the procedure for the arbitration shall be as follows:

(A) All arbitration proceedings shall be confidential;

(B) The parties shall submit written briefs to the arbitrator no later than 15 days before the arbitration commences;

(C) Discovery, if any, shall be limited as follows: (I) Requests for no more than 10 categories of documents, to be provided to the requesting party within 14 days of written request therefor; (II) No more than two (2) depositions per party, provided however, the deposition(s) are to be completed within one (1) day; (III) Compliance with the above shall be enforced by the arbitrator in accordance with California law;

(D) Each party shall have no longer than eight (8) hours to present its position. The entire hearing before the arbitrator shall not take longer than three (3) consecutive days;

(E) The award shall be made in writing no more than 30 days following the end of the proceeding. Judgment upon the award rendered by the arbitrator may be entered by any court having jurisdiction thereof.

To the fullest extent permitted by law, and except as required by applicable arbitration rules, each party shall bear its own attorneys' fees and costs in connection with the proceedings and shall share equally the fees and expenses of the arbitrator.

LIMITED RIGHT OF RESCISSION

If within one (1) year from the date of sale, the original purchaser (a) gives written notice to us alleging that the identification of Authorship (as defined below) of such lot as set forth in the **BOLD TYPE** heading of the catalog description of such lot (as amended by any saleroom notices or verbal announcements during the sale) is not substantially correct based on a fair reading of the catalog (including the terms of any glossary contained therein), and (b) within 10 days after such notice returns the lot to us in the same condition as at the time of sale, and (c) establishes the allegation in the notice to our satisfaction (including by providing one or more written opinions by recognized experts in the field, as we may reasonably require), then the sale of such lot will be rescinded and, unless we have already paid to the consignor monies owed him in connection with the sale, the original purchase price will be refunded.

If, prior to receiving such notice from the original purchaser alleging such defect, we have paid the consignor monies owed him in connection with the sale, we shall pay the original purchaser the amount of our commissions, any other sale proceeds to which we are entitled and applicable taxes received from the purchaser on the sale and make demand on the consignor to pay the balance of the original purchase price to the original purchaser. Should the consignor fail to pay such amount promptly, we may disclose the identity of the consignor and assign to the original purchaser our rights against the consignor with respect to the lot the sale of which is sought to be rescinded. Upon such disclosure and assignment, any liability of Bonhams as consignor's agent with respect to said lot shall automatically terminate.

The foregoing limited right of rescission is available to the original purchaser only and may not be assigned to or relied upon by any subsequent transferee of the property sold. The purchaser hereby accepts the benefit of the consignor's warranty of title and other representations and warranties made by the consignor for the purchaser's benefit. Nothing in this section shall be construed as an admission by us of any representation of fact, express or implied, obligation or responsibility with respect to any lot. **THE PURCHASER'S SOLE AND EXCLUSIVE**

REMEDY AGAINST BONHAMS FOR ANY REASON WHATSOEVER IS THE LIMITED RIGHT OF RESCISSION DESCRIBED IN THIS SECTION.

"Authorship" means only the identity of the creator, the period, culture and source or origin of the lot, as the case may be, as set forth in the **BOLD TYPE** heading of the print catalog entry. The right of rescission does not extend to: (a) works of art executed before 1870 (unless these works are determined to be counterfeits created since 1870), as this is a matter of current scholarly opinion which can change; (b) titles, descriptions, or other identification of offered lots, which information normally appears in lower case type below the **BOLD TYPE** heading identifying the Authorship; (c) Authorship of any lot where it was specifically mentioned that there exists a conflict of specialist or scholarly opinion regarding the Authorship of the lot at the time of sale; (d) Authorship of any lot which as of the date of sale was in accordance with the then generally-accepted opinion of scholars and specialists regarding the same; or (e) the identification of periods or dates of creation in catalog descriptions which may be proven inaccurate by means of scientific processes that are not generally accepted for use until after publication of the catalog in which the property is offered or that were unreasonably expensive or impractical to use at the time of such publication.

LIMITATION OF LIABILITY

EXCEPT AS EXPRESSLY PROVIDED ABOVE, ALL PROPERTY IS SOLD "AS IS." NEITHER BONHAMS NOR THE CONSIGNOR MAKES ANY REPRESENTATION OR WARRANTY, EXPRESS OR IMPLIED, AS TO THE MERCHANTABILITY, FITNESS OR CONDITION OF THE PROPERTY OR AS TO THE CORRECTNESS OF DESCRIPTION, GENUINENESS, ATTRIBUTION, PROVENANCE OR PERIOD OF THE PROPERTY OR AS TO WHETHER THE PURCHASER ACQUIRES ANY COPYRIGHTS OR OTHER INTELLECTUAL PROPERTY RIGHTS IN LOTS SOLD OR AS TO WHETHER A WORK OF ART IS SUBJECT TO THE ARTIST'S MORAL RIGHTS OR OTHER RESIDUAL RIGHTS OF THE ARTIST. THE PURCHASER EXPRESSLY ACKNOWLEDGES AND AGREES THAT IN NO EVENT SHALL BONHAMS BE LIABLE FOR ANY DAMAGES INCLUDING, WITHOUT LIMITATION, ANY COMPENSATORY, INCIDENTAL OR CONSEQUENTIAL DAMAGES.

SELLER'S GUIDE

SELLING AT AUCTION

Bonhams can help you every step of the way when you are ready to sell art, antiques and collectible items at auction. Our regional offices and representatives throughout the US are available to service all of your needs. Should you have any further questions, please visit our website at www.bonhams.com/us for more information or call our Client Services Department at +1 (323) 850 7500.

AUCTION ESTIMATES

The first step in the auction process is to determine the auction value of your property. Bonhams' world-renowned specialists will evaluate your special items at no charge and in complete confidence. You can obtain an auction estimate in many ways:

- Attend one of our Auction Evaluation Events held regularly at our galleries and in other major metropolitan areas. The updated schedule for Bonhams Auction Evaluation Events is available at www.bonhams.com/us.
- Call our Client Services Department to schedule a private appointment at one of our galleries. If you have a large collection, our specialists can travel, by appointment, to evaluate your property on site.
- Send clear photographs to us of each individual item, including item dimensions and other pertinent information with each picture. Photos should be sent to Bonhams' address in envelopes marked

as "photo auction estimate". Alternatively, you can submit your request using our online form at www.bonhams.com/us. Digital images may be attached to the form. Please limit your images to no more than five (5) per item.

CONSIGNING YOUR PROPERTY

After you receive an estimate, you may consign your property to us for sale in the next appropriate auction. Our staff assists you throughout the process, arranging transportation of your items to our galleries (at the consignor's expense), providing a detailed inventory of your consignment, and reporting the prices realized for each lot. We provide secure storage for your property in our warehouses and all items are insured throughout the auction process. You will receive payment for your property approximately 35 days after completion of sale.

Sales commissions vary with the potential auction value of the property and the particular auction in which the property is offered. Please call us for commission rates.

PROFESSIONAL APPRAISAL SERVICES

Bonhams' specialists conduct insurance and fair market value appraisals for private collectors, corporations, museums, fiduciaries and government entities on a daily basis. Insurance appraisals, used for insurance purposes, reflect the cost of replacing property in today's retail market. Fair market value appraisals are used for estate,

tax and family division purposes and reflect prices paid by a willing buyer to a willing seller.

When we conduct a private appraisal, our specialists will prepare a thorough inventory listing of all your appraised property by category. Valuations, complete descriptions and locations of items are included in the documentation.

Appraisal fees vary according to the nature of the collection, the amount of work involved, the travel distance, and whether the property is subsequently consigned for auction.

Our appraisers are available to help you anywhere and at any time. Please call our Client Services Department to schedule an appraisal.

ESTATE SERVICES

Since 1865, Bonhams has been serving the needs of fiduciaries – lawyers, trust officers, accountants and executors – in the disposition of large and small estates. Our services are specially designed to aid in the efficient appraisal and disposition of fine art, antiques, jewelry, and collectibles. We offer a full range of estate services, ranging from flexible financial terms to tailored accounting for heirs and their agents to world-class marketing and sales support.

For more information or to obtain a detailed Trust and Estates package, please visit our website at www.bonhams.com/us or contact our Client Services Department.

BUYER'S GUIDE

BIDDING & BUYING AT AUCTION

Whether you are an experienced bidder or an enthusiastic novice, auctions provide a stimulating atmosphere unlike any other. Bonhams previews and sales are free and open to the public. As you will find in these directions, bidding and buying at auction is easy and exciting. Should you have any further questions, please visit our website at www.bonhams.com or call our Client Services Department at +1 (323) 850 7500.

Catalogs

Before each auction we publish illustrated catalogs that include dates and times for previews and auctions. Our catalogs also provide descriptions and estimated values for each "lot." A lot may refer to a single item or to a group of items auctioned together. We offer our catalogs by subscription or by single copy. For information on subscribing to our catalogs, you may refer to the subscription form in this catalog, call our Client Services Department, or visit our website at www.bonhams.com/us.

Previews

Auction previews are your chance to inspect each lot prior to the auction. We encourage you to look closely and examine each object on which you may want to bid so that you will know as much as possible about it. Items are sold "as is" and with all faults; illustrations in our catalogs, website and other materials are provided for identification only. At the previews, our staff is always available to answer your questions and guide you through the auction process. Condition reports may be available upon request.

Estimates

Bonhams catalogs include estimates for each lot, exclusive of buyer's premium and tax. The estimates are provided as an approximate guide to current market value and should not be interpreted as a representation or prediction of actual selling prices. They are determined well in advance of a sale and are subject to revision. Please contact us should you have any questions about value estimates.

Reserves

All lots in a catalog are subject to a reserve unless otherwise indicated. The reserve is the minimum price that the seller is willing to accept for a lot. This amount is confidential and does not exceed the low estimated value.

BIDDING AT AUCTION

At Bonhams, you can bid in many ways: in person, via absentee bid, over the phone, or via Bonhams' online bidding facility. Absentee bids can be submitted in person, online, via fax or via email.

A valid Bonhams client account is required to participate in bidding activity. You can obtain registration information online, at the reception desk or by calling our Client Services Department.

By bidding at auction, whether in person or by agent, by absentee bid, telephone, online or other means, the buyer or bidder agrees to be bound by the Conditions of Sale.

Lots are auctioned in consecutive numerical order as they appear in the catalog. Bidding normally begins below the low estimate. The auctioneer will accept bids from interested parties present in the saleroom, from telephone bidders, and from absentee bidders who have left written bids in advance of the sale. The auctioneer may also execute bids on behalf of the consignor up to the amount of the reserve, but never above it.

We assume no responsibility for failure to execute bids for any reason whatsoever.

In Person

If you are planning to bid at auction, you will need to register at the reception desk in order to receive a numbered bid card. To place a bid, hold up your card so that the auctioneer can clearly see it. Decide on the maximum amount that you wish to pay, exclusive of buyer's premium and tax, and continue bidding until your bid prevails or you reach your limit. If you are the successful bidder on a lot, the auctioneer will acknowledge your paddle number and bid amount.

Absentee Bids

As a service to those wishing to place bids, we may at our discretion accept bids without charge in advance of sale by telephone, by facsimile or in writing on bidding forms available from us. "Buy" bids will not be accepted; all bids must state the highest bid price the bidder is willing to pay. Our auction staff will try to bid just as you would, with the goal of obtaining the

item at the lowest bid price possible. In the event identical bids are submitted, the earliest bid submitted will take precedence. Absentee bids shall be executed in competition with other absentee bids, any applicable reserve, and bids from other auction participants. A friend or agent may place bids on your behalf, provided that we have received your written authorization prior to the sale. Absentee bid forms are available in our catalogs, online at www.bonhams.com/us, and at our San Francisco, Los Angeles and New York galleries.

By Telephone

Under special circumstances, we can arrange for you to bid by telephone. To arrange for a telephone bid, please contact our Client Services Department a minimum of 24 hours prior to the sale.

Online

Web users may place absentee bids online from anywhere in the world. To bid online, please visit our website at www.bonhams.com/us.

We are pleased to make our live online bidding facility available to bidders in this sale.

Additional terms and conditions of sale relating to online bidding will apply. Please see www.bonhams.com/24850 or www.bonhams.com/25201 or contact the Client Services Department to obtain information and learn how you can register and bid online in this sale.

Bid Increments

Bonhams generally uses the following increment multiples as bidding progresses:

\$50-200	by \$10s
\$200-500	by \$20/50/80s
\$500-1,000	by \$50s
\$1,000-2,000	by \$100s
\$2,000-5,000	by \$200/500/800s
\$5,000-10,000	by \$500s
\$10,000-20,000	by \$1,000s
\$20,000-50,000	by \$2,000/5,000/8,000s
\$50,000-100,000	by \$5,000s
\$100,000-200,000	by \$10,000s
above \$200,000	at auctioneer's discretion

The auctioneer may split or reject any bid at any time at his or her discretion as outlined in the Conditions of Sale.

Currency Converter

Solely for the convenience of bidders, a currency converter may be provided at Bonhams sales. The rates quoted for conversion of other currencies to U.S. Dollars are indications only and should not be relied upon by a bidder, and neither Bonhams nor its agents shall be responsible for any errors or omissions in the operation or accuracy of the currency converter.

Buyer's Premium

A buyer's premium is added to the winning bid price of each individual lot purchased, at the rates set forth in the Conditions of Sale. The winning bid price plus the premium constitute the purchase price for the lot. Applicable sales taxes are computed based on this figure, and the total becomes your final purchase price.

Unless specifically illustrated and noted, fine art frames are not included in the estimate or purchase price. Bonhams accepts no liability for damage or loss to frames during storage or shipment.

All sales are final and subject to the Conditions of Sale found in our catalogs, on our website, and available at the reception desk.

Payment

All buyers are asked to pay and pick up by 3pm on the business day following the auction. Payment may be made to Bonhams by cash, checks drawn on a U.S. bank, money order, wire transfer, or by Visa, MasterCard, American Express or Discover credit or charge card or debit card. All items must be paid for within 5 business days of the sale. Please note that payment by personal or business check may result in property not being released until purchase funds clear our bank.

Sales Tax

Residents of states listed in Paragraph 1 of the Conditions of Sale must pay applicable sales tax. Other state or local taxes (or compensation use taxes) may apply. Sales tax will be automatically added to the invoice unless a valid resale number has been furnished or the property is shipped via

common carrier to destinations outside the states listed in the Conditions of Sale. If you wish to use your resale license please contact Cashiers for our form.

Shipping & Removal

See page 2

Bonhams can accommodate shipping for certain items. Please contact our Cashiers Department for more information or to obtain a quote. Refer to Conditions of Sale for special terms governing the shipment of Arms and Wine. Shipments are made during weekday business hours up to four weeks after payment is received. Carriers are not permitted to deliver to P.O. Boxes.

International buyers are responsible for all import/export customs duties and taxes. An invoice stating the actual purchase price(s) will accompany all international purchases.

Simultaneous sale property collection notice:

If this sale previews in multiple cities, please see the title page for details regarding final location of property for collection.

Auction Results

Auction results are usually available on the next business day following the sale or online at www.bonhams.com/us.

CONTACTS

OFFICERS

Malcolm Barber
Co-Chairman

Matthew Girling
Chief Executive Officer

Laura King Pfaff •
Chairman Emeritus

Leslie Wright
Deputy Chairman Vice President,
Trusts and Estates

Vice Presidents, Specialists
Rupert Banner

Mark Fisher
Dessa Goddard
Jeremy Goldsmith

Jakob Greisen
Bruce MacLaren
Scot Levitt
Mark Osborne
Brooke Sivo
Catherine Williamson

REPRESENTATIVES

Arizona

Terri Adrian-Hardy, (602) 859 1843

California

David Daniel
(916) 364 1645, Central Valley

California

Brooke Sivo
(760) 350 4255, Palm Springs
(760) 567 1744, San Diego

Chicago

Natalie B. Waechter, (773) 267 3300

Colorado

Lance Vigil
(720) 355 3737, Denver

Florida

April Matteini, (305) 978 2459
Alexis Cronin Butler, (305) 878 5366

Georgia

Mary Moore Bethea, (404) 842 1500 •

Illinois

Natalie B. Waechter, (773) 267 3300

Massachusetts/New England

Amy Corcoran, (617) 742 0909

Nevada

David Daniel, (775) 831 0330

New Mexico

Terri Adrian-Hardy, (602) 859 1843

Oregon and Idaho

Sheryl Acheson, (971) 727 7797

Texas, Oklahoma and Louisiana

texas@bonhams.com

Virginia and Washington DC

Mid-Atlantic Region

Gertraud Hechl, (202) 422 2733 •

Washington

Heather O'Mahony, (206) 566 3913

Canada, Toronto, Ontario

Kristin Kearney, (416) 462 9004 •

Montreal, Quebec

David Kelsey, (514) 894 1138 •

BONHAMS *

NEW YORK DEPARTMENTS
580 Madison Avenue
New York, New York 10022
(212) 644 9001

Books & Manuscripts

Ian Ehling, (212) 644 9094
Darren Sutherland, (212) 461 6531

Chinese Works of Art & Paintings

Bruce MacLaren, (917) 206 1677
Ming Hua, (646) 837 8132
Harold Yeo, (917) 206 1628 •

Collectors' Motorcars & Motorcycles

Rupert Banner, (212) 461 6515
Eric Minoff, (917) 206 1630
Evan Ide, (917) 340 4657
Michael Caimano, (929) 666 2243

American Art

Jennifer Jacobsen, (917) 206 1699
Elizabeth Goodridge, (917) 206 1621

Contemporary Art

Jeremy Goldsmith, (917) 206 1656
Jacqueline Towers-Perkins,
(212) 644 9039

European Paintings

Madalina Lazen, (212) 644 9108

Impressionist & Modern Art

Caitlyn Pickens, (212) 644 9135

Himalayan Art

Mark Rasmussen, (917) 206 1688

Japanese Works of Art

Jeff Olson, (212) 461 6516

Jewelry

Caroline Morrissey, (212) 644 9046
Camille Barbier, (212) 644 9035

Modern Decorative Arts & Design

Benjamin Walker, (212) 710 1306
Dan Tolson, (917) 206 1611

Photographs

Laura Paterson, (917) 206 1653

Prints and Multiples

Deborah Ripley, (212) 644 9059

Russian Fine & Decorative Arts

Yelena Harbick, (212) 644 9136

Trusts & Estates

Sherri Cohen, (917) 206 1671

Watches & Clocks

Jonathan Snellenburg, (212) 461 6530

CLIENT SERVICES DEPARTMENT

San Francisco

(415) 861 7500
(415) 861 8951 fax

Monday - Friday, 9am to 5pm

Los Angeles

(323) 850 7500
(323) 850 6090 fax

Monday - Friday, 9am to 5pm

BONHAMS *

SAN FRANCISCO DEPARTMENTS
220 San Bruno Avenue
San Francisco California 94103
(415) 861 7500

20th Century Fine Art

Sonja Moro, (415) 503 3412

Books & Manuscripts

Adam Stackhouse, (415) 503 3266

Chinese Works of Art

Dessa Goddard, (415) 503 3333
Henry Kleinhenz, (415) 503 3336
Daniel Hersksee, (415) 503 3271
Lingling Shang, (415) 503 3207 •
Amelia Chao, (415) 503 3397

Furniture & Decorative Arts

Caroline Cole, (415) 503 3400

Jewelry & Watches

Shannon Beck, (415) 503 3306

Collectors' Motorcars & Motorcycles

Mark Osborne, (415) 503 3353
Jakob Greisen, (415) 503 3284

Museum Services

Laura King Pfaff, (415) 503 3210

Native American Art

Ingmars Lindbergs, (415) 503 3393

California & Western

Paintings & Sculpture

Aaron Bastian, (415) 503 3241

Prints & Photographs

Morisa Rosenberg, (415) 503 3259

Space History

Adam Stackhouse, (415) 503 3266

Wine

Christine Ballard, (415) 503 3221

Trusts & Estates

Victoria Richardson, (415) 503 3207
Celeste Smith, (415) 503 3214

BONHAMS *

LOS ANGELES DEPARTMENTS
7601 W. Sunset Boulevard
Los Angeles California 90046
(323) 850 7500

20th Century Decorative Arts & Design

Angela Past, (323) 436 5422
Jason Stein, (323) 436 5466

Post-War & Contemporary Art

Alexis Chompaisal, (323) 436 5469

Asian Works of Art

Rachel Du, (323) 436 5587

African, Oceanic & Pre-Columbian Art

Fredric W. Backlar, (323) 436 5416 •

Books & Manuscripts

Catherine Williamson, (323) 436 5442

Coins & Banknotes

Paul Song, (323) 436 5455

Impressionist & Modern Art

Kathy Wong, (323) 436 5415

Entertainment Memorabilia

Catherine Williamson, (323) 436 5442
Dana Hawkes, (978) 283 1518

Jewelry & Watches

Dana Ehrman, (323) 436 5407
Alexis Vourvoulis, (323) 436 5483

Collectors' Motorcars & Motorcycles

Michael Caimano, (929) 666 2243

Prints & Photographs

Morisa Rosenberg, (323) 436 5435

Natural History

Thomas E. Lindgren, (310) 469 8567 •
Claudia Florian, G.J.G., (323) 436 5437 •

California & Western

Paintings & Sculpture

Scot Levitt, (323) 436 5425
Kathy Wong, (323) 436 5415

European Paintings

Mark Fisher, (323) 436 5488
Rocco Rich, (323) 436 5410

Trusts & Estates

Leslie Wright, (323) 436 5408
Joseph Francaviglia, (323) 436 5443

* Indicates saleroom
• Indicates independent contractor

Auction Registration Form

(Attendee / Absentee / Online / Telephone Bidding)

Please circle your bidding method above.

--	--	--	--

Paddle number (for office use only)

General Notice: This sale will be conducted in accordance with Bonhams Conditions of Sale, and your bidding and buying at the sale will be governed by such terms and conditions. Please read the Conditions of Sale in conjunction with the Buyer's Guide relating to this sale and other published notices and terms relating to bidding. Payment by personal or business check may result in your property not being released until purchase funds clear our bank. Checks must be drawn on a U.S. bank.

Notice to Absentee Bidders: In the table below, please provide details of the lots on which you wish to place bids at least 24 hours prior to the sale. Bids will be rounded down to the nearest increment. Please refer to the Buyer's Guide in the catalog for further information relating to instructions to Bonhams to execute absentee bids on your behalf. Bonhams will endeavor to execute bids on your behalf but will not be liable for any errors or non-executed bids.

Notice to First Time Bidders: New clients are requested to provide photographic proof of ID - passport, driving license, ID card, together with proof of address - utility bill, bank or credit card statement etc. Corporate clients should also provide a copy of their articles of association / company registration documents, together with a letter authorizing the individual to bid on the company's behalf. Failure to provide this may result in your bids not being processed. For higher value lots you may also be asked to provide a bankers reference.

Notice to online bidders; If you have forgotten your username and password for www.bonhams.com, please contact Client Services.

If successful

- I will collect the purchases myself
- Please contact me with a shipping quote (if applicable)
- I will arrange a third party to collect my purchase(s)

Please email or fax the completed Registration Form and requested information to:

Bonhams Client Services Department
 7601 W. Sunset Blvd
 Los Angeles, California 90046
 Tel +1 (323) 850 7500
 Fax +1 (323) 850 6090
bids.us@bonhams.com

Bonhams

Sale title: Native American Arts		Sale date: December 10-11, 2018	
Sale no. 24850 / 25201		Sale venue: Los Angeles	
General Bid Increments:			
\$10 - 200by 10s		\$10,000 - 20,000by 1,000s	
\$200 - 500by 20 / 50 / 80s		\$20,000 - 50,000by 2,000 / 5,000 / 8,000s	
\$500 - 1,000by 50s		\$50,000 - 100,000by 5,000s	
\$1,000 - 2,000by 100s		\$100,000 - 200,000by 10,000s	
\$2,000 - 5,000by 200 / 500 / 800s		above \$200,000at the auctioneer's discretion	
\$5,000 - 10,000by 500s		The auctioneer has discretion to split any bid at any time.	
Customer Number		Title	
First Name		Last Name	
Company name (to be invoiced if applicable)			
Address			
City		County / State	
Post / Zip code		Country	
Telephone mobile		Telephone daytime	
Telephone evening		Fax	
Telephone bidders: indicate primary and secondary contact numbers by writing ① or ② next to the telephone number.			
E-mail (in capitals) _____			
By providing your email address above, you authorize Bonhams to send you marketing materials and news concerning Bonhams and partner organizations. Bonhams does not sell or trade email addresses.			
I am registering to bid as a private client <input type="checkbox"/>		I am registering to bid as a trade client <input type="checkbox"/>	
Resale: please enter your resale license number here _____ We may contact you for additional information.			

SHIPPING	
Shipping Address (if different than above):	
Address: _____	Country: _____
City: _____	Post/ZIP code: _____

Please note that all telephone calls are recorded.

Type of bid (A-Absentee, T-Telephone)	Lot no.	Brief description (In the event of any discrepancy, lot number and not lot description will govern.) If you are bidding online there is no need to complete this section.	MAX bid in US\$ (excluding premium and applicable tax) Emergency bid for telephone bidders only*

You instruct us to execute each absentee bid up to the corresponding bid amount indicated above.

* Emergency Bid: A maximum bid (exclusive of Buyer's Premium and tax) to be executed by Bonhams only if we are unable to contact you by telephone or should the connection be lost during bidding.

BY SIGNING THIS FORM YOU AGREE THAT YOU HAVE READ AND UNDERSTAND OUR CONDITIONS OF SALE AND SHALL BE LEGALLY BOUND BY THEM, AND YOU AGREE TO PAY THE BUYER'S PREMIUM, ANY APPLICABLE TAXES, AND ANY OTHER CHARGES MENTIONED IN THE BUYER'S GUIDE OR CONDITIONS OF SALE. THIS AFFECTS YOUR LEGAL RIGHTS.	
Your signature: _____	Date: _____

Bonhams

AUCTIONEERS SINCE 1793



..... THE
SCOTTSDALE
.....^{AZ}
Auction.....

Scottsdale, Arizona | January 17, 2019

CONSIGNMENTS
NOW INVITED

INQUIRIES
+1 (415) 391 4000, West Coast
+1 (212) 461 6514, East Coast
motors.us@bonhams.com
bonhams.com/motorcars

*Stirling Moss, Walt Hansgen,
Ivor Bueb and Bob Grossman
SCCA Championship Winner
Among the most original examples*
1959 LISTER-JAGUAR SPORTS RACER
Design by Frank Costin

Bonhams
7601 W. Sunset Boulevard
Los Angeles, California 90046

+1 323 850 7500
bonhams.com

AUCTIONEERS SINCE 1793